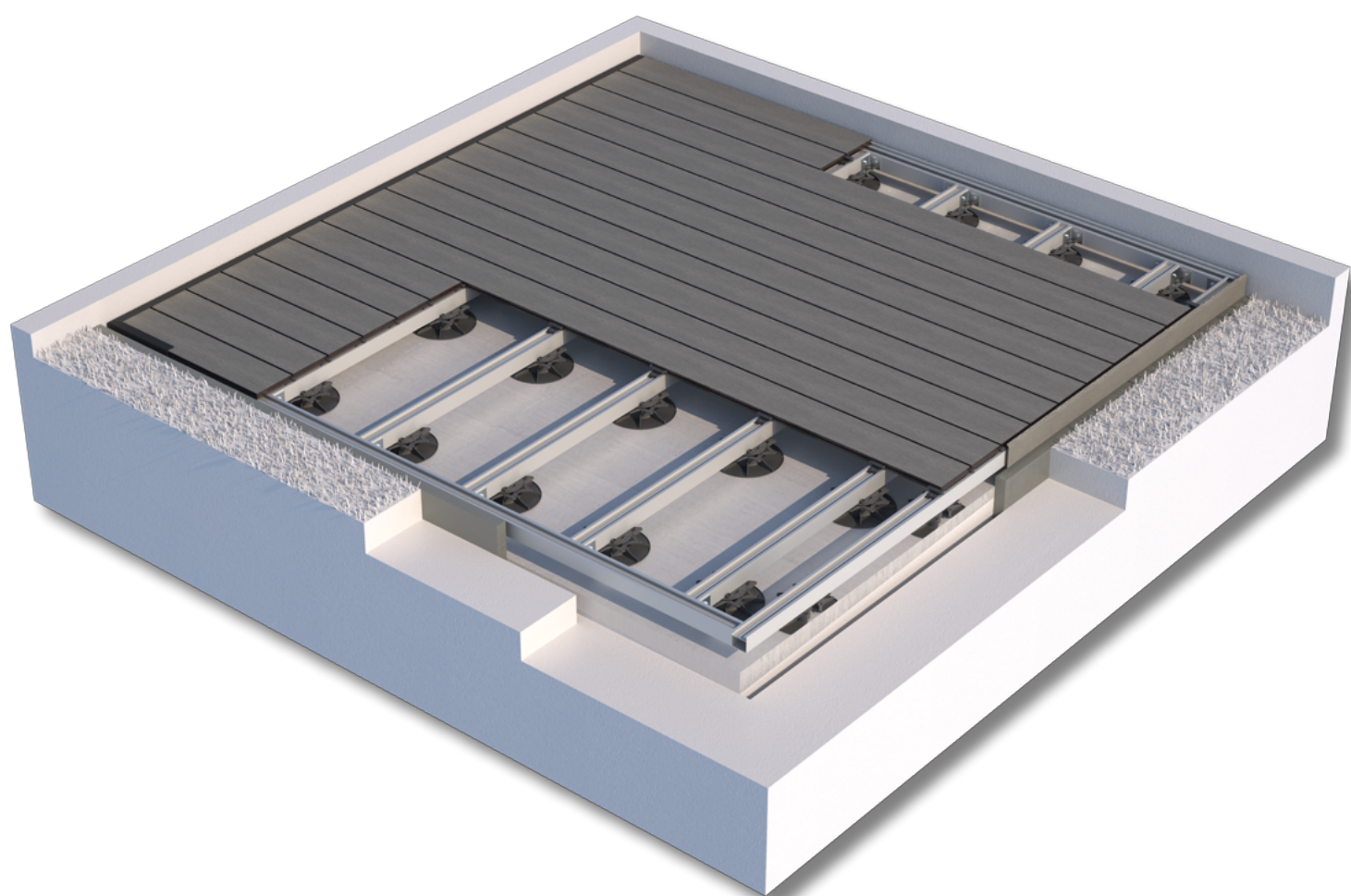


Terrace Massive Pro Group Manual

deceuninck



Contents

1 General information – 4

1.1 What is Terrace Massive Pro? – 5

1.2 Product characteristics – 5

1.3 Visual aspect – 5

1.4 Mechanical properties – 5

1.5 Warranty – 7

1.6 Recycling – 7

2 Preparation / processing – 8

2.1 Storage & transport – 9

2.2 Tools – 9

2.3 Recommended safety equipment – 9

2.4 Maximum load – 9

2.5 Installation instructions – 10

2.5.1 General instructions – 10

2.5.2 Restrictions – 10

2.6 Initial cleaning – 11



This symbol appears on pages which are new or differ from the previous manual version.

Please consult the up to date installation manual on our website www.deceuninck.com

01/2017 - V1.0 - published work© 2017 - Deceuninck

Deceuninck composed this brochure with the utmost care. Nevertheless, data contained in this brochure might be outdated, incomplete, and/or inaccurate. No rights, claims, commitments or guarantees can be derived from the presented information. The texts, photographs, logos, pictures and brands (among which Deceuninck, Linktrusion and Twinson included) are covered by intellectual property rights. They are exclusive property of Deceuninck. Nothing included in this publication can, fully or partially, in any way be reproduced without prior permission.

The available profiles and accessories may vary depending on your location. To find out which profiles and accessories are available in your area, see www.deceuninck.com or contact a local dealer.

3 Quick guides – 12

- 3.1 Quick guide P 9369 - P 9522 – 13
- 3.2 Quick guide P 9369 - P 9524 – 18
- 3.3 Quick guide P 9369 - P 9523 – 23
- 3.4 Quick guide P 9369 - P 9552 – 28
- 3.5 Quick guide P 9369 - wood – 33
- 3.6 Quick guide Adjustable pedestal – 38

4 Maintenance – 39

- 4.1 Care – 40
- 4.2 Cleaning – 40

5 Replacement – 42

- 5.1 Kit P 9477 – 43
- 5.2 Kit P 9469 – 44



This symbol appears on pages which are new or differ from the previous manual version.
Please consult the up to date installation manual on our website www.deceuninck.com

01/2017 - V1.0 - published work© 2017 - Deceuninck

Deceuninck composed this brochure with the utmost care. Nevertheless, data contained in this brochure might be outdated, incomplete, and/or inaccurate. No rights, claims, commitments or guarantees can be derived from the presented information. The texts, photographs, logos, pictures and brands (among which Deceuninck, Linktrusion and Twinson included) are covered by intellectual property rights. They are exclusive property of Deceuninck. Nothing included in this publication can, fully or partially, in any way be reproduced without prior permission.

The available profiles and accessories may vary depending on your location. To find out which profiles and accessories are available in your area, see www.deceuninck.com or contact a local dealer.

Terrace Massive Pro

1 General information

deceuninck

1. What is Terrace Massive Pro?
2. Product characteristics
3. Mechanical properties
4. Warranty
5. Recycling



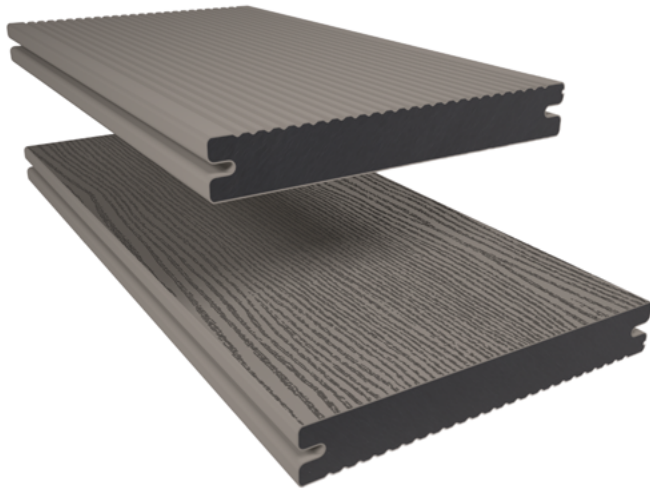
Before installation, please read carefully the installation instructions!

01/2017 - V1.0 - published work© 2017 - Deceuninck

Deceuninck composed this brochure with the utmost care. Nevertheless, data contained in this brochure might be outdated, incomplete, and/or inaccurate. No rights, claims, commitments or guarantees can be derived from the presented information. The texts, photographs, logos, pictures and brands (among which Deceuninck, Linktrusion and Twinson included) are covered by intellectual property rights. They are exclusive property of Deceuninck. Nothing included in this publication can, fully or partially, in any way be reproduced without prior permission.

The available profiles and accessories may vary depending on your location. To find out which profiles and accessories are available in your area, see www.deceuninck.com or contact a local dealer.

1.1 What is Terrace Massive Pro?



- Terrace Massive Pro is made of wood and PVC.
- The Terrace Massive Pro deck has a natural wood structure in combination with its maintenance friendliness.
- With the PEFC certification, it is an environmentally friendly alternative for tropical hardwood.

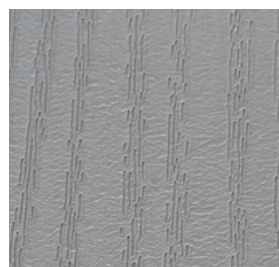


1.2 Product characteristics

- High stain resistance
- High scratch resistance
- Easy maintenance
- High slip resistance
- High impact resistance
- Very good colour resistance
- 100% recyclable
- For residential and commercial use
- Reversible, both sides are usable

1.3 Visual aspect

The new technology all-round the board creates a rougher surface, thereby increasing both the slip as the scratch resistance and this while retaining the other product characteristics such as easy maintenance, high stain resistance, ...
The beautiful matt colour is typical.



Detail of the embossing.

1.4 Mechanical properties

See tables next page (fig. 1), for material and product related characteristics.

- Application P 9369:
 - Date: 28/10/2016
 - Version: 01

| | | | EN 15534-1 | BASED ON | SPECIFIC PROPERTY | UNIT | VALUE |
|---|-----------------------|---|------------|----------------|----------------------------|--|-------------|
| MATERIAL CHARACTERISTICS COEX | physical properties | density | § 6.2 | ISO 1183-1/A | | kg/dm ³ | 1.41 ± 0.05 |
| | | moisture content | § 6.3 | ISO 16979 | | % | < 0.2 |
| | | resistance to indentation | § 7.5 | EN 1534 | 1 kN | MPa | > 100 |
| | | | | | 3 kN | MPa | > 120 |
| | durability | artificial weathering (300 hours WOM) | --- | EN 513-1 | discoloration | dE | < 5 |
| | | resistance to termites | § 8.4 | EN 117 | | class | 1 |
| | | resistance against basidiomycetes | § 8.5.2 | ENV 12038 | | class | 1 |
| | | resistance against soil inhabiting soft rotting micro-fungi | § 8.5.3 | CEN/TS 15083-2 | | class | 1 |
| PRODUCT RELATED CHARACTERISTICS (P9369) | physical properties | slip resistance | --- | DIN 51130 | rifled surface | class | R10 |
| | | | --- | DIN 51130 | wood structure | class | R11 |
| | mechanical properties | impact resistance | § 7.1.2.1 | EN 477 | falling mass | J | > 20 |
| | | flexural properties (Lv = 50 cm) | § 7.3.2 | EN 310 | flexural modulus | MPa | 6000 ± 10% |
| | | | | | bending strength | MPa | > 40 |
| | | | | | bending at break | mm | 15 ± 2 |
| | | creep behaviour (Lv = 50 cm / 85kg / 50°C / 7 days) | § 7.4.1 | EN 310 | additional bending | mm | < 10 |
| | durability | natural weathering (1 year Bandol) | § 8.2.1 | ISO 877-2 | discoloration | dE | < 5 |
| | | | | | impact retention | % | < 20 |
| | | | | | bending strength retention | % | < 20 |
| | | cyclic conditions (Lv = 50 cm) | § 8.3.2 | EN 321 | bending strength retention | % | < 20 |
| | | boiling test | § 8.3.3 | ISO 1087-1 | mass increase | % | < 4 |
| | | | | | length increase | % | < 0.6 |
| | | | | | width increase | % | < 1.5 |
| | | | | | thickness increase | % | < 4 |
| | thermal properties | heat reversion | § 9.3 | EN 479 | | % | < 0.2 |
| | | heat build-up | § 9.4 | ASTM D4083 | | °C | < 45 |
| | | linear thermal expansion (-20°C ... + 60°C) | § 9.2 | ISO 11359-2 | length direction | 10 ⁻⁶ m ⁻¹ K ⁻¹ | 20 - 25 |
| | | | | | width direction | 10 ⁻⁶ m ⁻¹ K ⁻¹ | 45 - 50 |
| | | | | | thickness | 10 ⁻⁶ m ⁻¹ K ⁻¹ | 80 - 90 |

fig.1: Mechanical properties.

1.5 Warranty



The warranty conditions are available on the website or at a local dealer.

1.6 Recycling

An important aspect of sustainable building is the life expectancy of the materials and the impact that they have on the environment. There is no sense of using an environmentally friendly building material if the durability can not be guaranteed. That is why Deceuninck has created the Twinson bag. The intention is that after installation all the Twinson cut-offs are collected in the special Twinson bag. This material can be returned to Deceuninck to be recycled, enabling us to have a closed loop recycling system.

To guarantee that the next generation of Terrace Massive Pro profiles are not polluted with saw dust, aluminium or other material we ask you to only put Twinson cut-offs in the bag. Close the bag before returning it to Deceuninck. Maximum weight of 30 kg.



Terrace Massive Pro

2 Preparation / processing

deceuninck

1. Storage & transport
2. Tools
3. Recommended safety equipment
4. Maximum load
5. Installation instructions
6. Initial cleaning



Before installation, please read carefully the installation instructions!

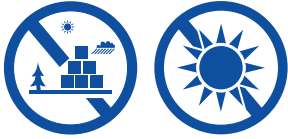
01/2017 - V1.0 - published work© 2017 - Deceuninck

Deceuninck composed this brochure with the utmost care. Nevertheless, data contained in this brochure might be outdated, incomplete, and/or inaccurate. No rights, claims, commitments or guarantees can be derived from the presented information. The texts, photographs, logos, pictures and brands (among which Deceuninck, Linktrusion and Twinson included) are covered by intellectual property rights. They are exclusive property of Deceuninck. Nothing included in this publication can, fully or partially, in any way be reproduced without prior permission.

The available profiles and accessories may vary depending on your location. To find out which profiles and accessories are available in your area, see www.deceuninck.com or contact a local dealer.

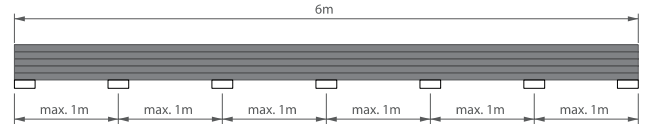
2.1 Storage & transport

- Store profiles or stillages containing profiles in a dry and ventilated environment, away from direct exposure to sunlight.



- Stock and transport the profiles horizontally.
- Handle long profiles with 2 persons (> 2 m).

- Unload the profiles with care.
- Ensure that the profiles are secured during transportation, profiles can easily slide over each other and this can leave shiny tracks and burrs on to the profiles.
- Distance between supports maximum 1 m.



2.2 Tools

- You can use almost the same range of tools as for wood.

| | | | | | |
|-------|-----|-------|------|------|---------------------------------|
| | | | | | |
| drill | saw | screw | glue | mill | rubber hammer and wooden buffer |

- Specific tools / machining:
 - Glass paper, sandpaper, wire brush or steel wool.
 - Drilling: HSS metal drill bits.
During drilling, for best result do not apply heavy pressure. Periodically lift the bit to clear the shavings.
 - Cutting: use thin saw blades with carbide teeth.
Number of teeth: minimum 80 (Ø 250 mm - Ø 300 mm).

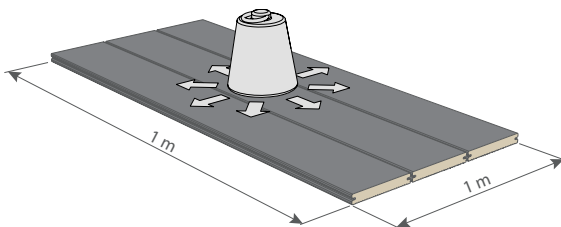
2.3 Recommended safety equipment



2.4 Maximum load

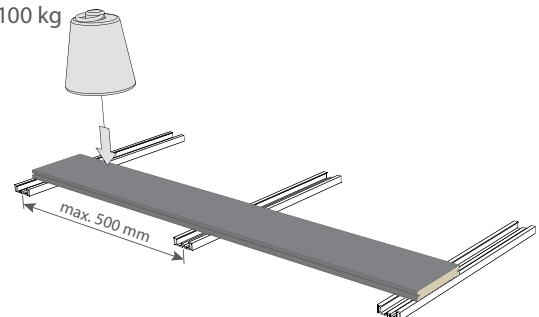
Uniformly distributed load

max. 1400 kg/m²



Point load

max. 100 kg



2.5 Installation instructions

2.5.1 General instructions

- Distance between centres support beams:

| | 90° | 45° |
|---|----------|----------|
| X | ≤ 250 mm | ≤ 150 mm |
| Y | ≤ 50 mm | ≤ 50 mm |
- Installation 90° (fig. 1): possible for all mentioned support beams in this manual.
- Installation 45° (fig. 2): only possible with P 9552 and wooden support beams.

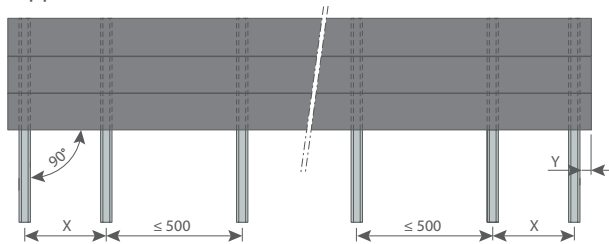


fig.1: Installation 90°

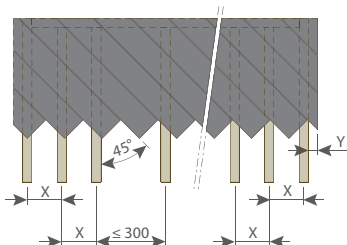
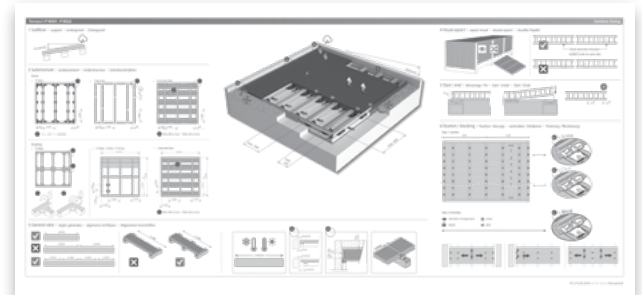
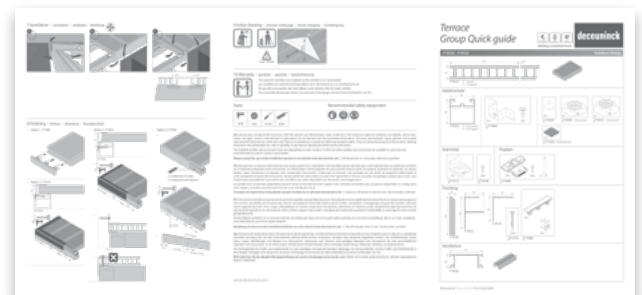


fig.2: Installation 45°

- For a perfect result, it is advisable to cut both ends of the plank removing approx 10 mm. The planks are slightly rounded at the

ends because of the embossing process.

- Always use a wooden buffer and rubber hammer to protect the head ends of the planks when these need to be moved lengthwise during installation, this to avoid damage of the surface.
- Always cut the planks with the visible side upwards when cutting the planks on length.
- For each combination of support beam and plank, there is a specific installation quick guide (see next chapter).



2.5.2 Restrictions

Terrace Massive Pro acquires certain specific installation methods which include expansion rules, support rules, fixing rules, ... Thorough studying of the technical manual will ensure more profitable projects. Failure to do so may result in difficult installations, unforeseen problems or even errors that may jeopardise the deck's long-term integrity and/or the product warranty.

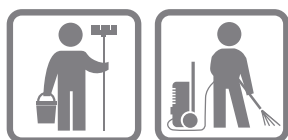
- Is the construction according to the local building regulations and planning rules and the following been taken into account?
 - Meets requirements for safe construction
 - Plumbing or electrical work for hot tubs or lighting
 - Depths and seismic requirements
- Acclimatise profiles to local site conditions for at least 24 hours before installation.
- Installation below 0°C is not allowed.
- Terrace Massive Pro profiles must not be used as a structural component.
- The Terrace planks cannot be seen as self supporting. For applications in galleries, walkways, access balconies, stairs, ...
 - (this list is not exhaustive) special measures must be foreseen.
- Terrace is not developed for loads as cars, trailers, horses, ...
- Terrace Massive Pro planks must be installed on a grid or lattice. You cannot install the planks directly on to the flat ground because of ventilation and water drainage reasons.
- The planks cannot be glued to the ground.
- Foresee sufficient unobstructed air flow to allow drying of the space beneath the deck.
- Installations that require expert or engineer's advice:
 - Highly elevated decks
 - Ground with poor bearing capacity
 - Steep or unstable hillsides
 - Large cantilevers
 - Roof decks
 - Supporting structures and foundations with concentrated loading such as hot tub, jacuzzi, big flower pots, ...
- The supporting structure and foundation of a deck needs to:
 - be strong enough to hold up the deck itself:
 - statically weight-bearing

- people who will be using the deck
- all the things placed on the deck
- be protective against rot and insects
- be solid enough to withstand freezing temperatures and wind or mild quakes
- be flat with a slope of 10 mm/m in the direction of the Terrace Massive Pro planks

- Guarantee the water flow at all times for proper drainage, water logging must be avoided.

You should seek a local engineer's advice when there are doubts about the foundation.

2.6 Initial cleaning



It is possible that there is dust build-up after installation. We recommend you to wash the surface thoroughly. This can be done by using a soft brush and

water combined with a diluted household detergent.

It is also possible to clean the deck with a high pressure cleaner (not a steam cleaner). The pressure nozzle should be kept 30 cm from the surface and the pressure limited to 100 bar max.



Terrace Massive Pro

3 Quick guides

deceuninck

1. Quick guide P 9369 - P 9522
2. Quick guide P 9369 - P 9524
3. Quick guide P 9369 - P 9523
4. Quick guide P 9369 - P 9552
5. Quick guide P 9369 - wood
6. Quick guide Adjustable pedestal



Before installation, please read carefully the installation instructions!

01/2017 - V1.0 - published work© 2017 - Deceuninck

Deceuninck composed this brochure with the utmost care. Nevertheless, data contained in this brochure might be outdated, incomplete, and/or inaccurate. No rights, claims, commitments or guarantees can be derived from the presented information. The texts, photographs, logos, pictures and brands (among which Deceuninck, Linktrusion and Twinson included) are covered by intellectual property rights. They are exclusive property of Deceuninck. Nothing included in this publication can, fully or partially, in any way be reproduced without prior permission.

The available profiles and accessories may vary depending on your location. To find out which profiles and accessories are available in your area, see www.deceuninck.com or contact a local dealer.

Terrace Massive

Terrace Massive Pro

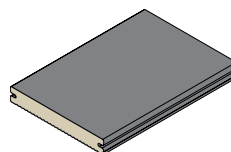
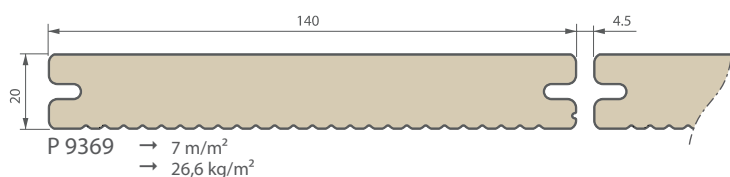
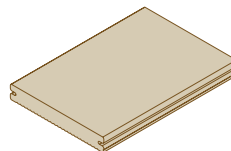
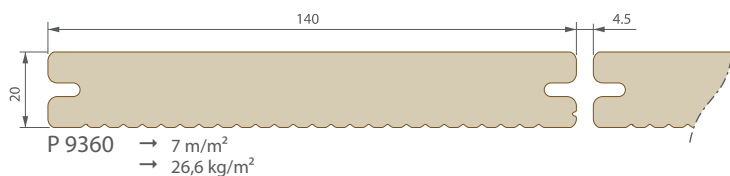


Building a sustainable home

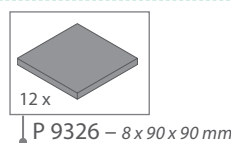
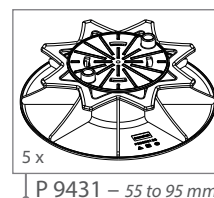
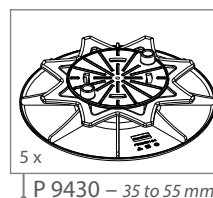
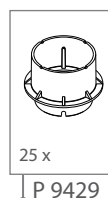
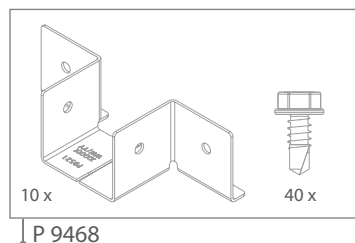
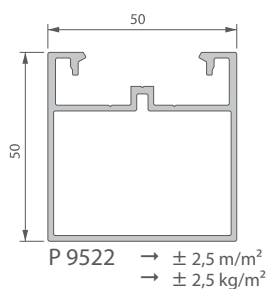
deceuninck

Quick guide P 9360 | P 9369 - P 9522

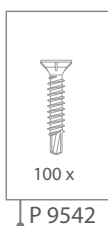
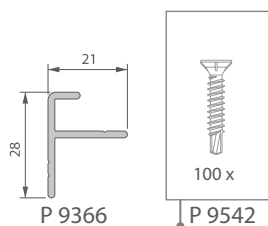
Outdoor living



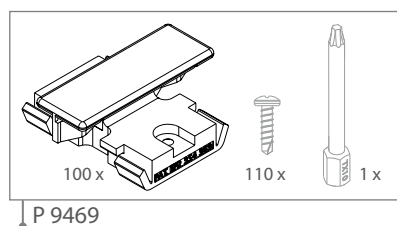
Substructure



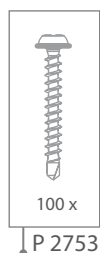
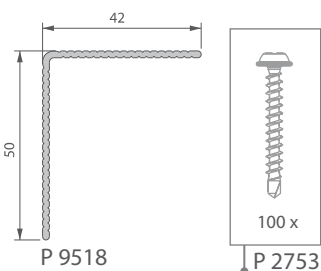
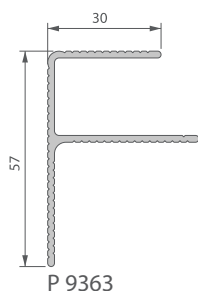
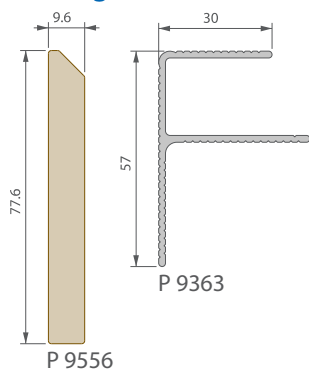
Start/end



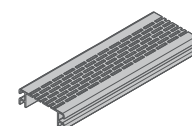
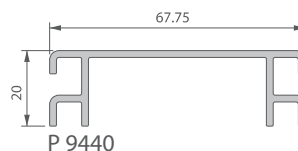
Fixation



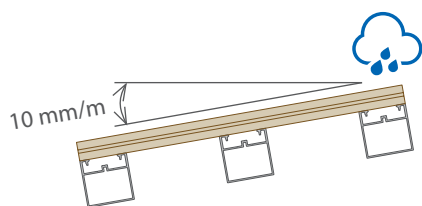
Finishing



Ventilation



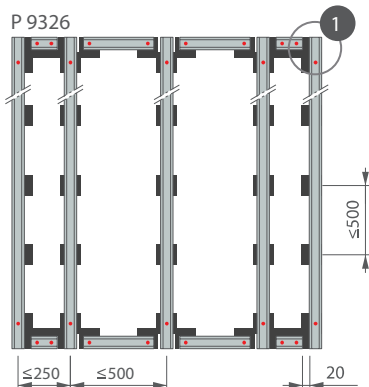
1 Subfloor | support | ondergrond | Untergrund



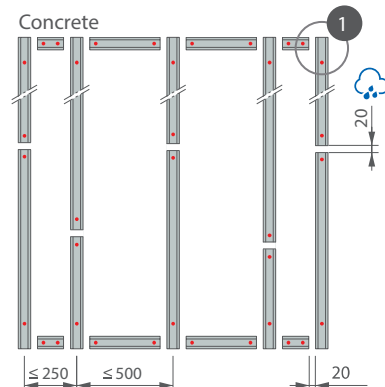
2 Substructure | soubassement | onderstructuur | Unterkonstruktion

Fixed

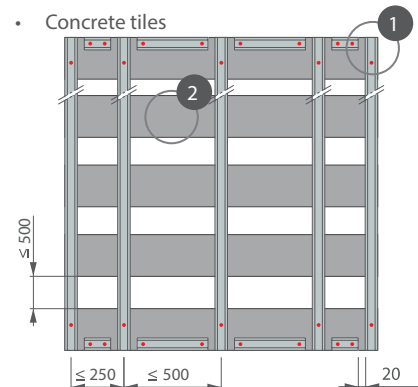
• P 9326



• Concrete



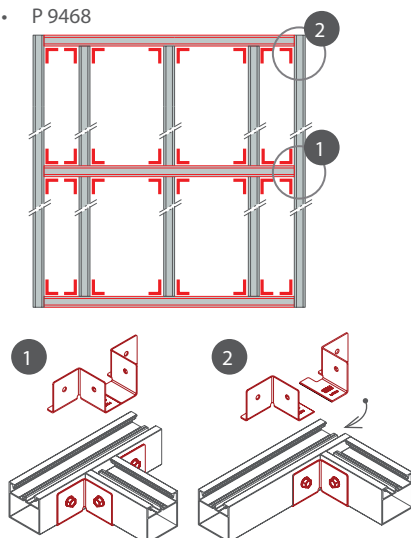
• Concrete tiles



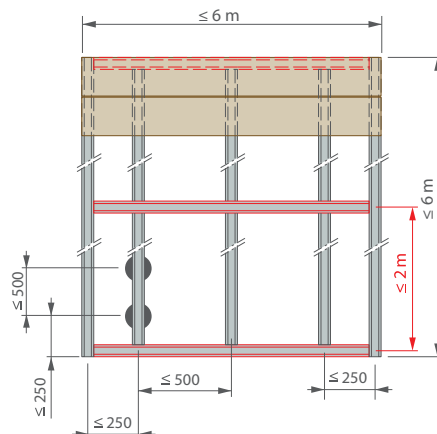
2 40 x 40 x 5 cm – 100 x 25 x 5 cm

Floating

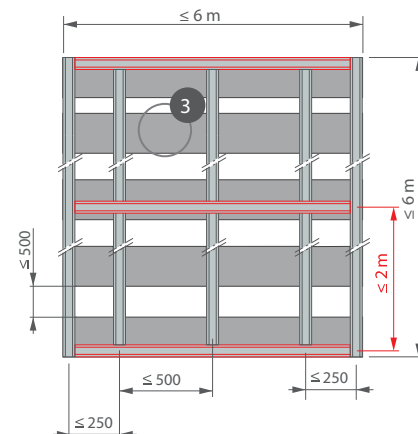
• P 9468



• P 9430 - P 9431 / P 9326

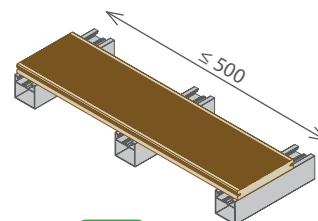
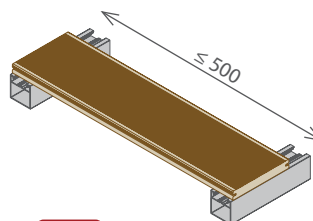
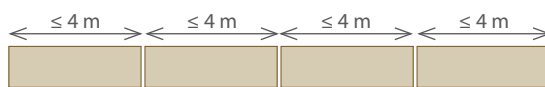
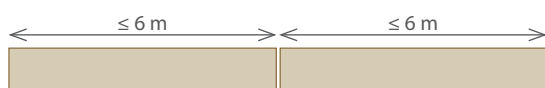


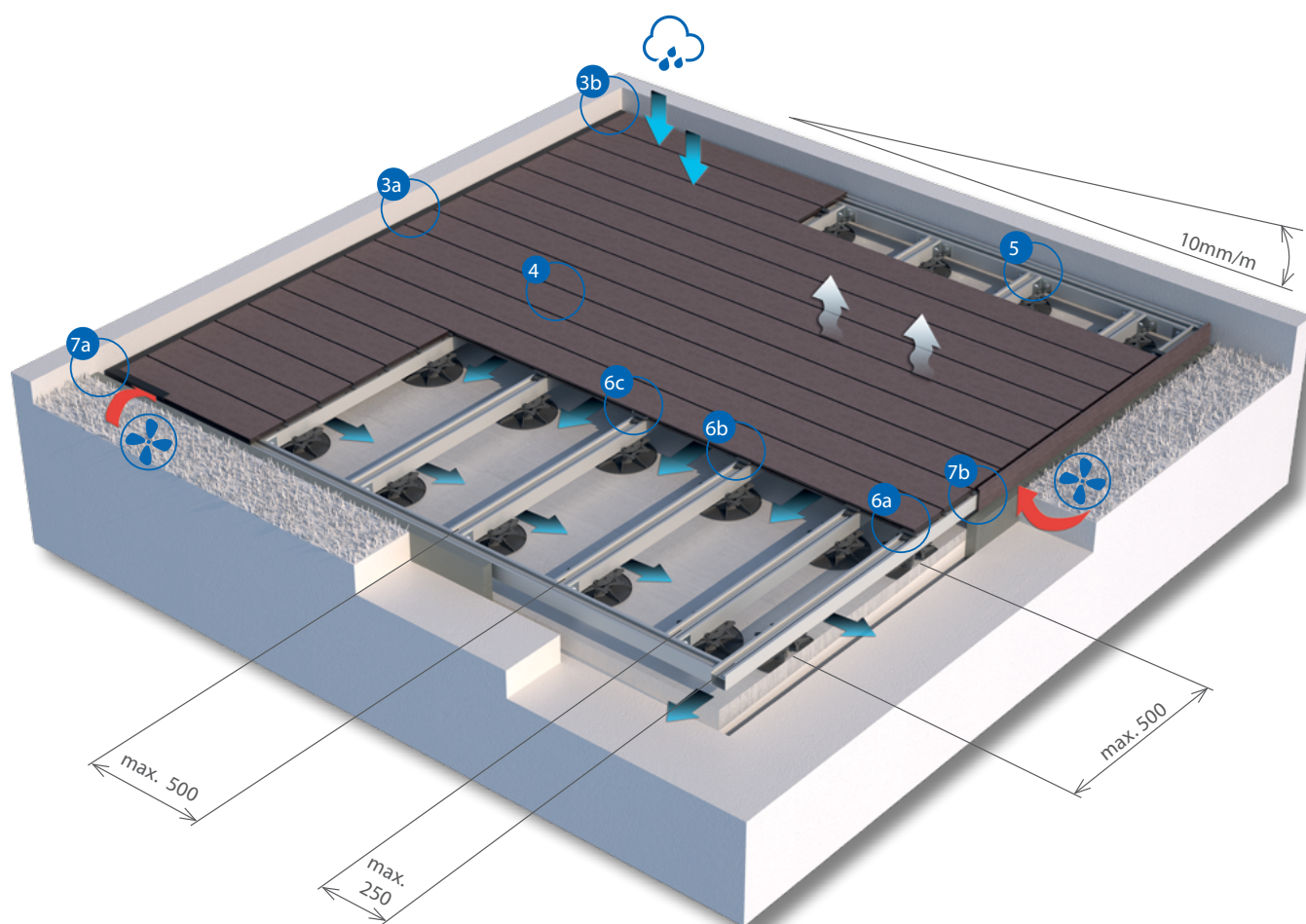
• Concrete tiles



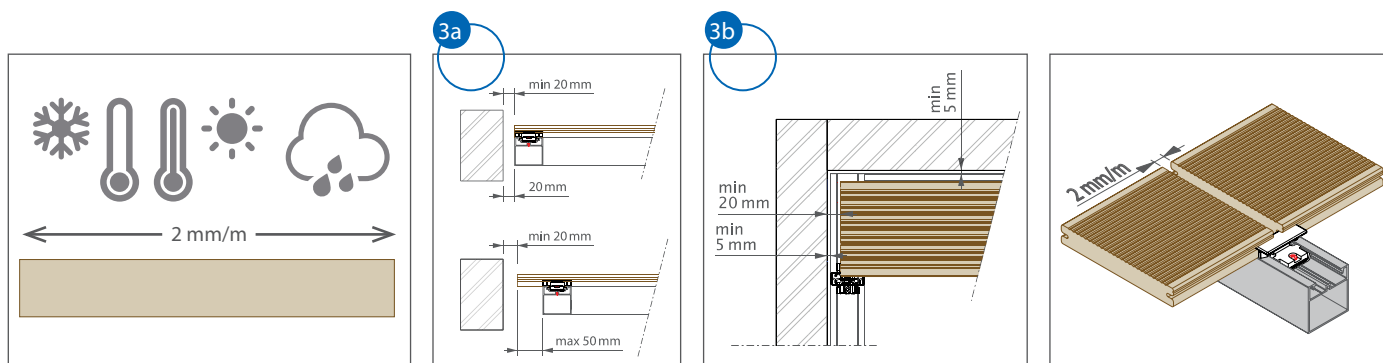
3 40 x 40 x 5 cm – 100 x 25 x 5 cm

3 General rules | règles générales | algemene richtlijnen | Allgemeine Vorschriften

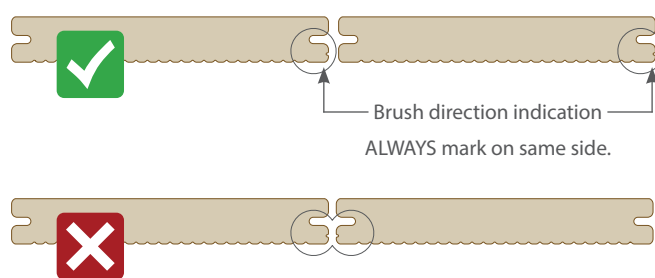
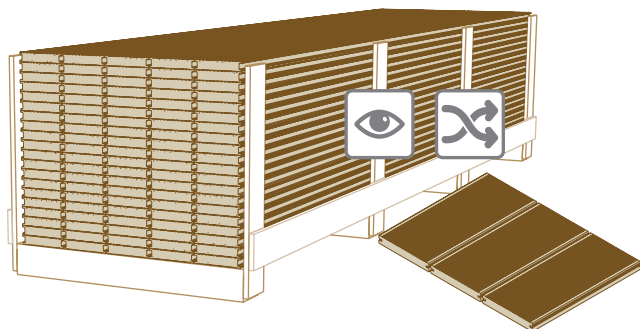




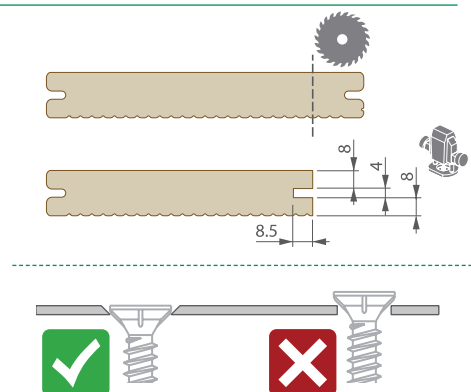
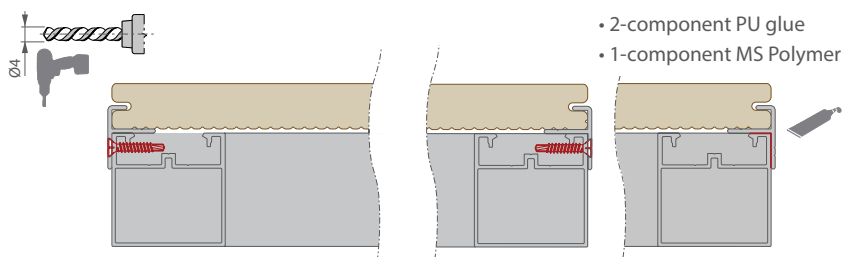
3 General rules | règles générales | algemene richtlijnen | Allgemeine Vorschriften



4 Visual aspect | aspect visuel | visueel aspect | visueller Aspekt

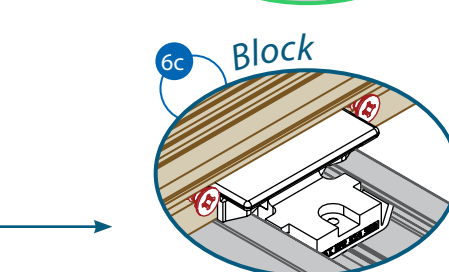
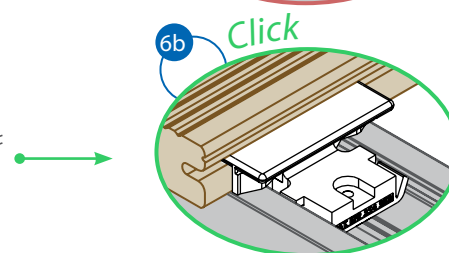
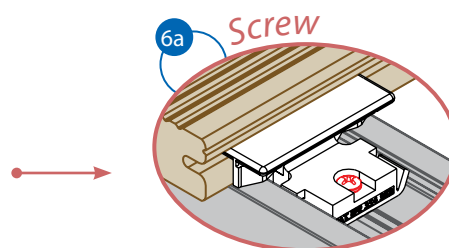
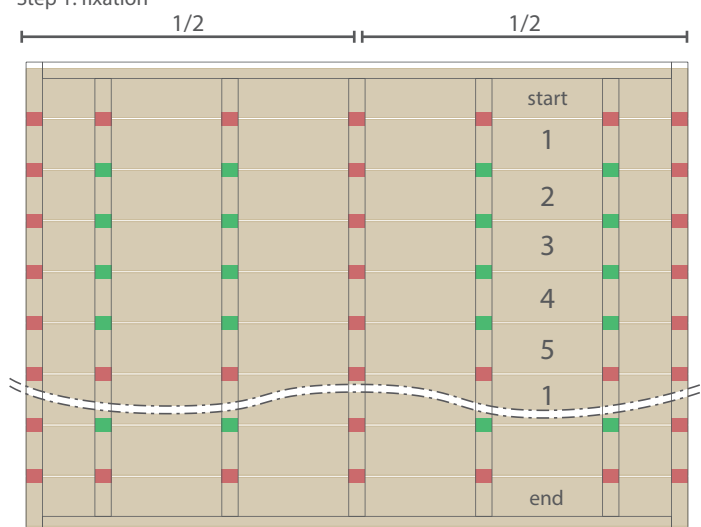


5 Start / end | démarrage / fin | start / einde | Start / Ende



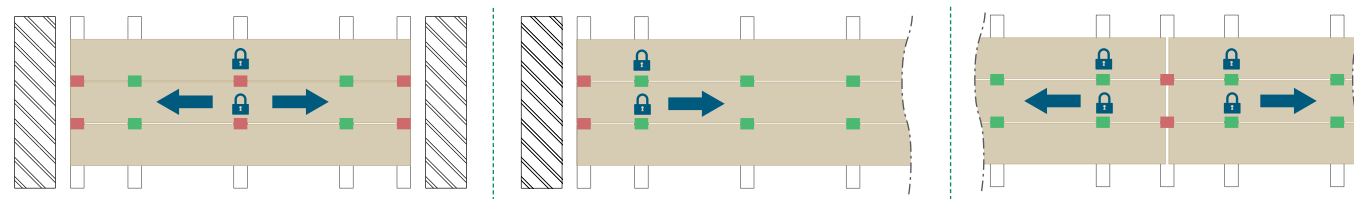
6 Fixation / blocking | fixation / blocage | vastmaken / blokkeren | Fixierung / Blockierung

Step 1: fixation

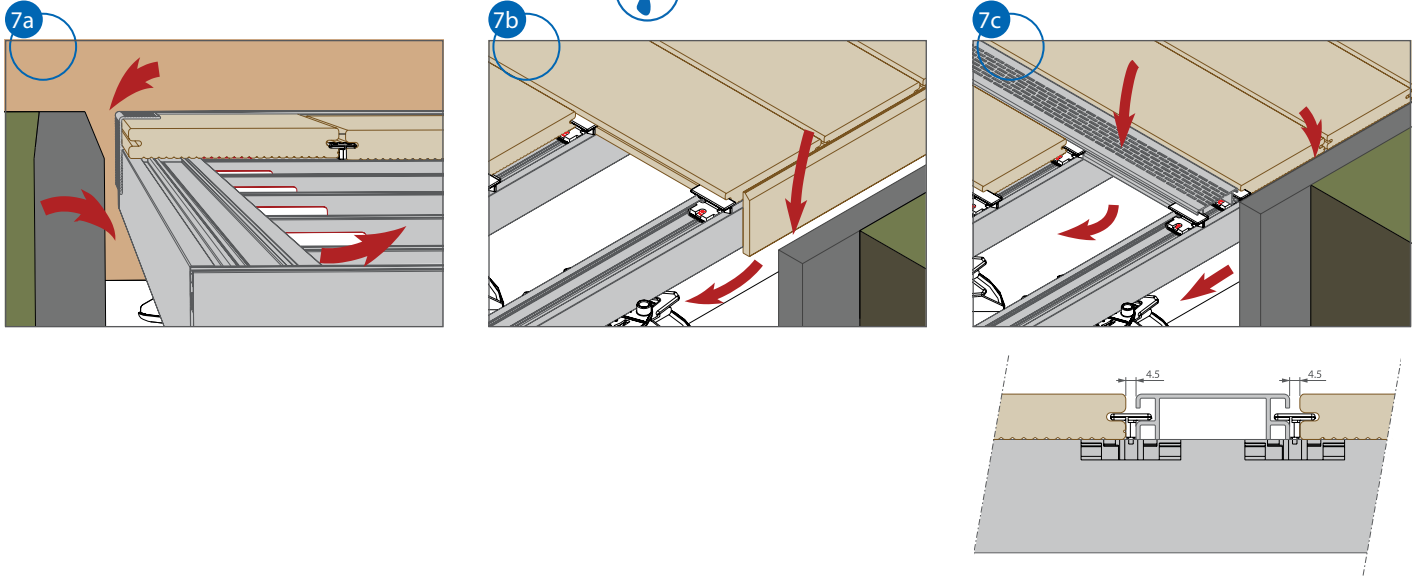


Step 2: blocking

- ➔ direction of expansion
- 🔒 block
- screw
- click

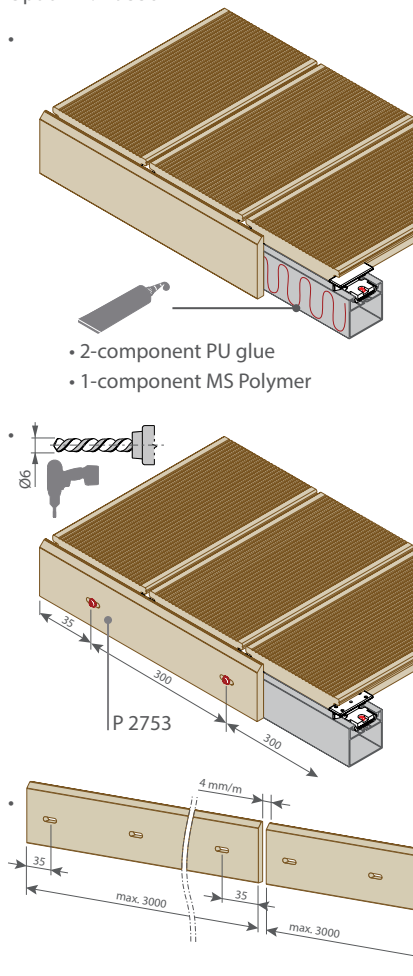


7 Ventilation | ventilation | ventilatie | Belüftung

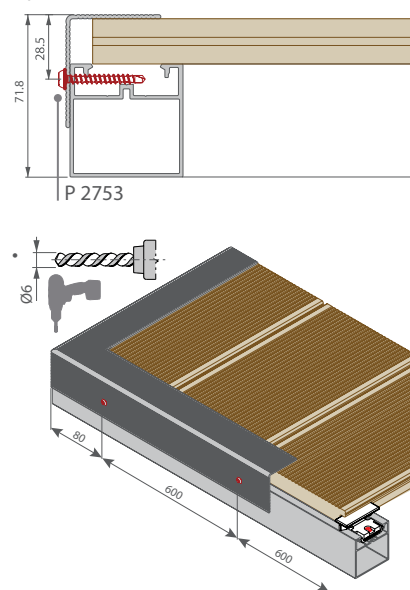


8 Finishing | finition | afwerking | Randabschluß

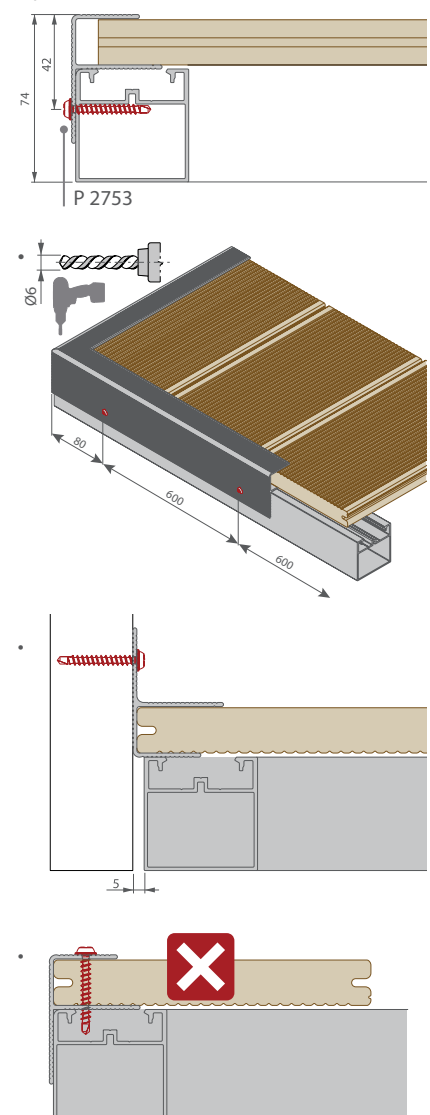
• Option 1 : P 9556



• Option 2 : P 9518



• Option 3 : P 9363



Terrace Massive

Terrace Massive Pro

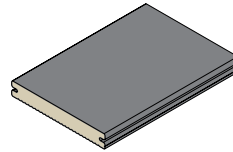
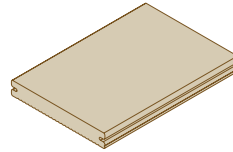
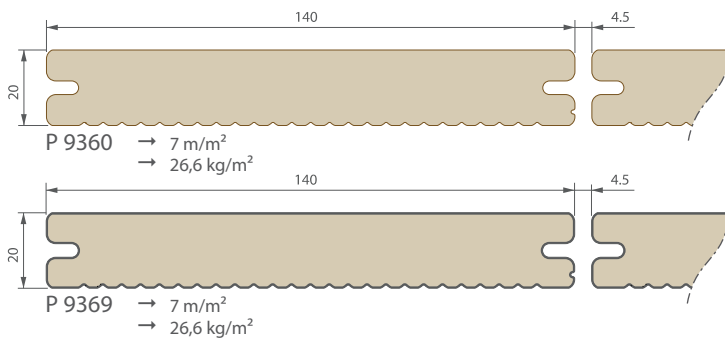


Building a sustainable home

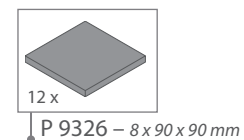
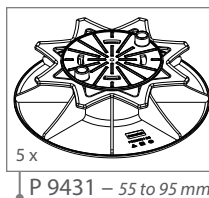
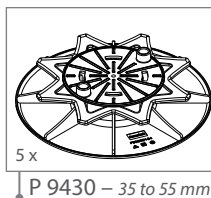
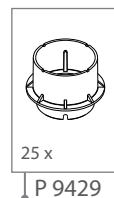
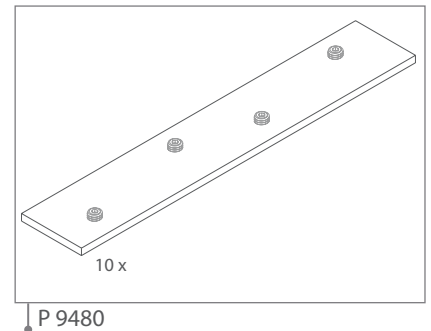
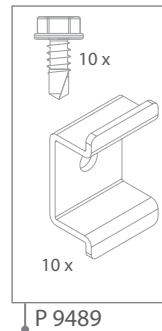
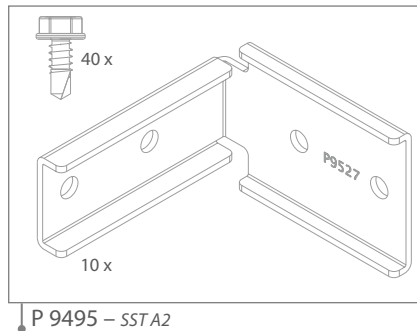
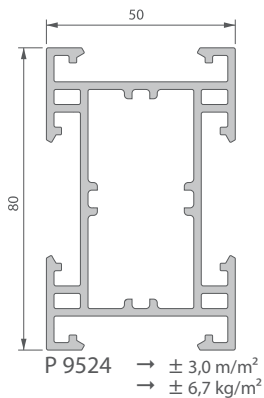
deceuninck

Quick guide P 9360 | P 9369 - P 9524

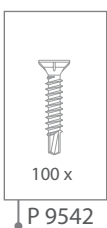
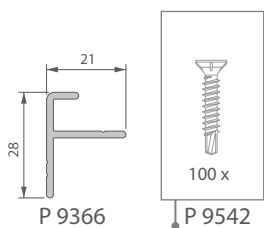
Outdoor living



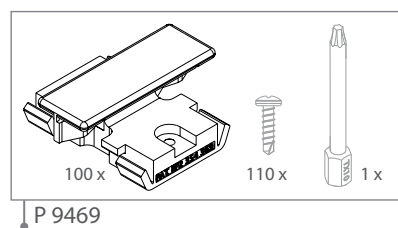
Substructure



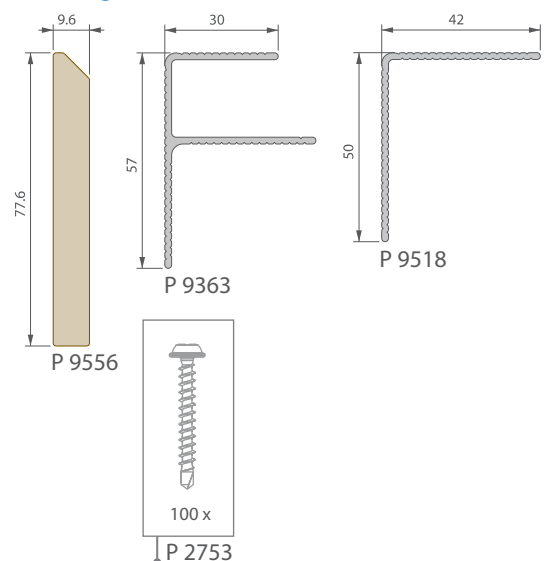
Start/end



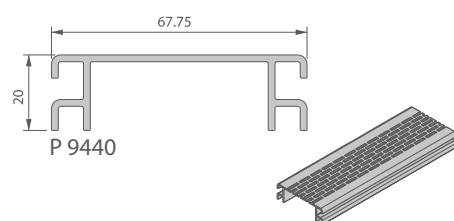
Fixation



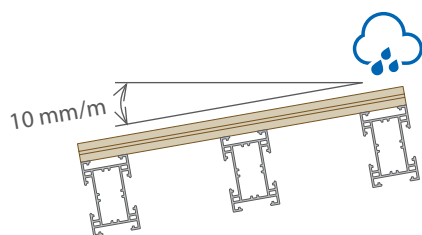
Finishing



Ventilation



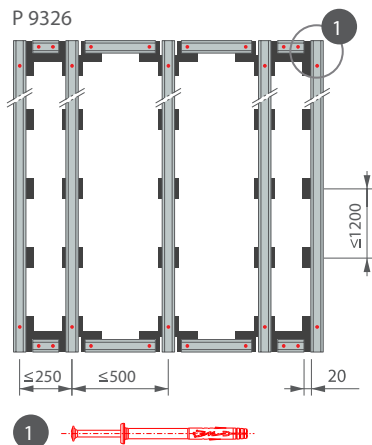
1 Subfloor | support | ondergrond | Untergrund



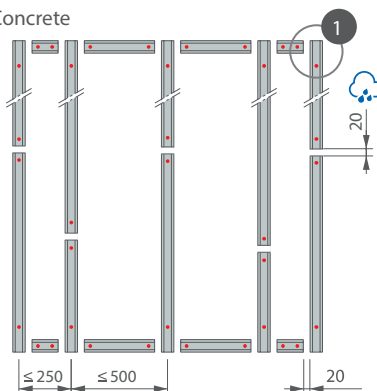
2 Substructure | soubassement | onderstructuur | Unterkonstruktion

Fixed

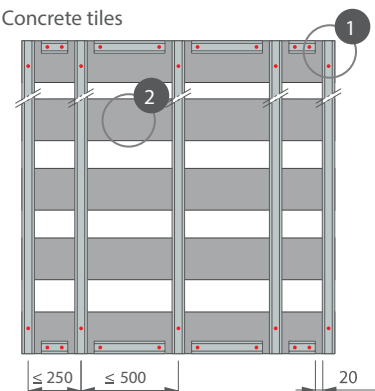
• P 9326



• Concrete



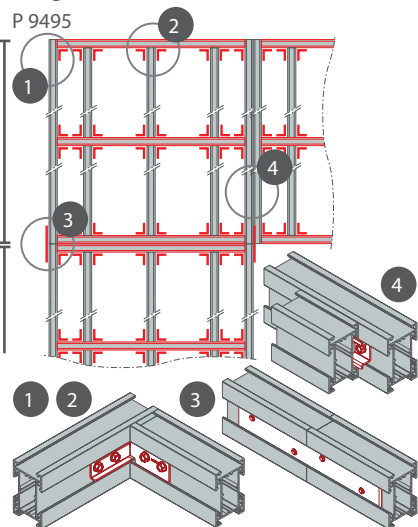
• Concrete tiles



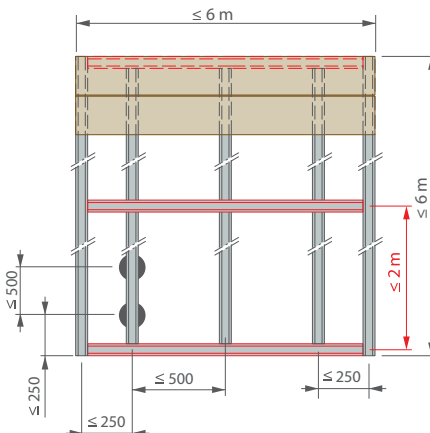
2 40 x 40 x 5 cm – 100 x 25 x 5 cm

Floating

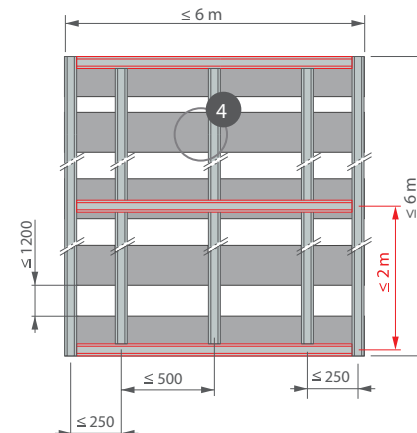
• P 9495



• P 9430 - P 9431 / P 9326

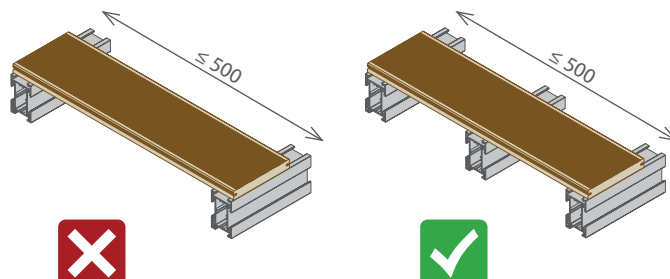
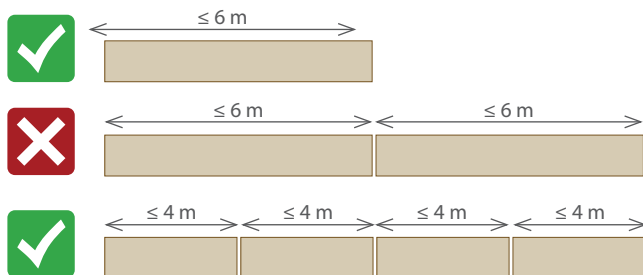


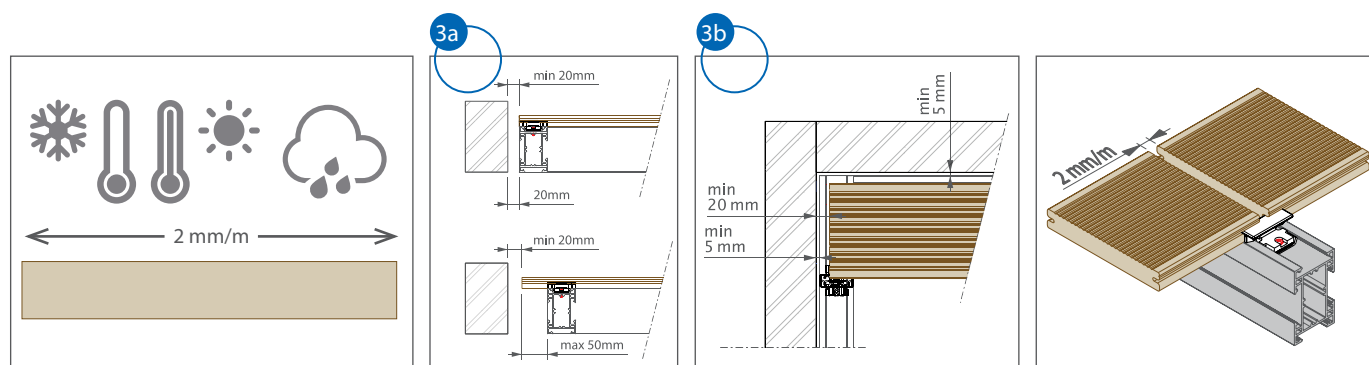
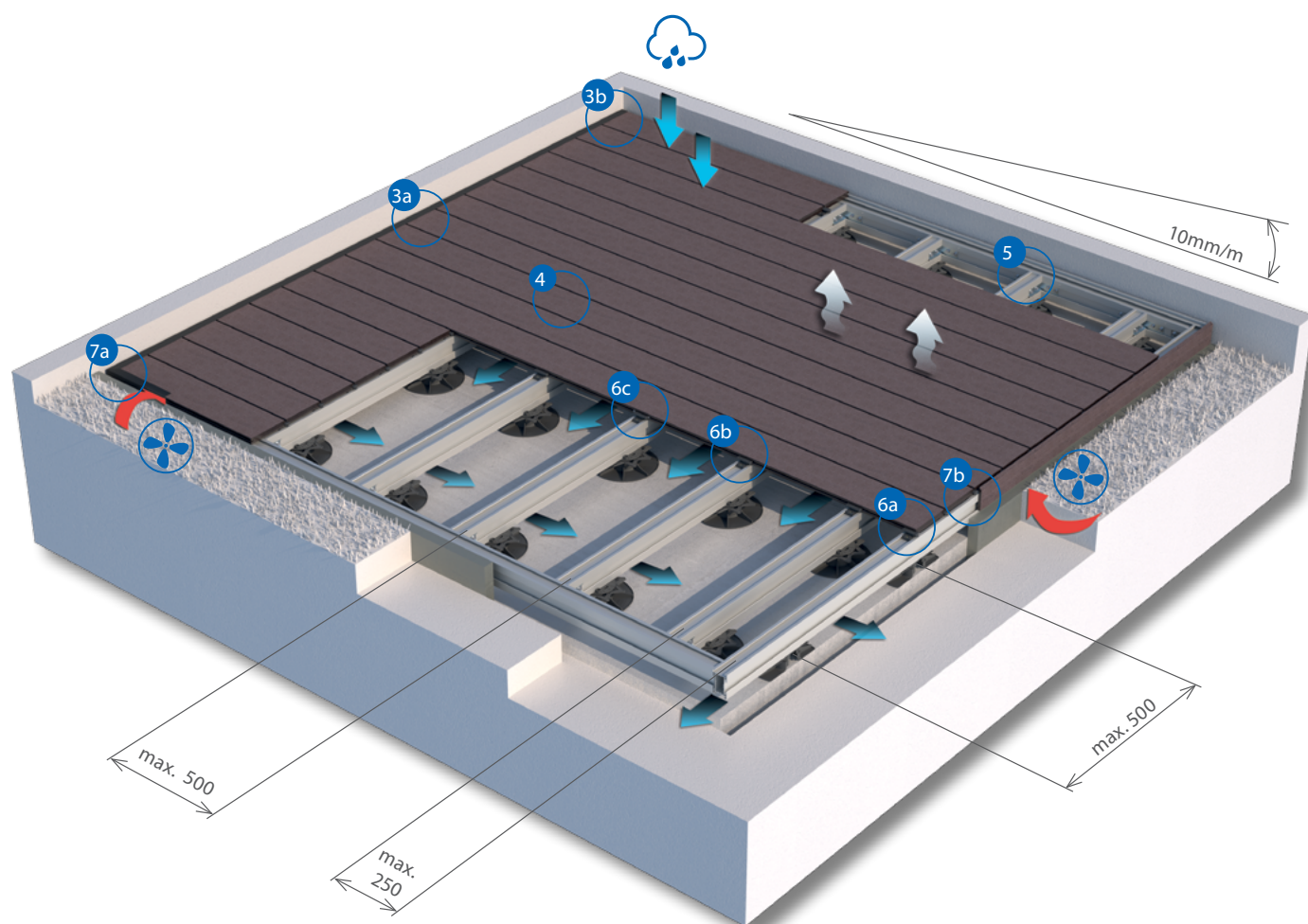
• Concrete tiles



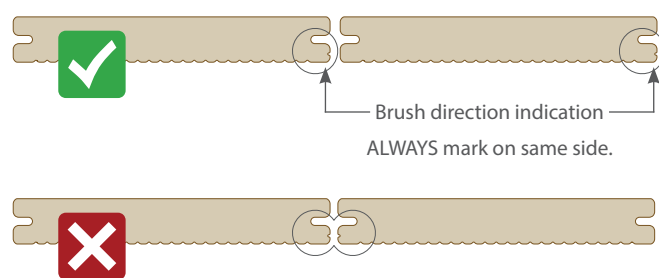
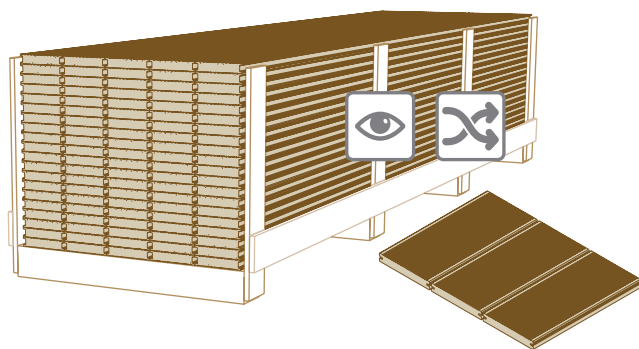
4 40 x 40 x 5 cm – 100 x 25 x 5 cm

3 General rules | règles générales | algemene richtlijnen | Allgemeine Vorschriften

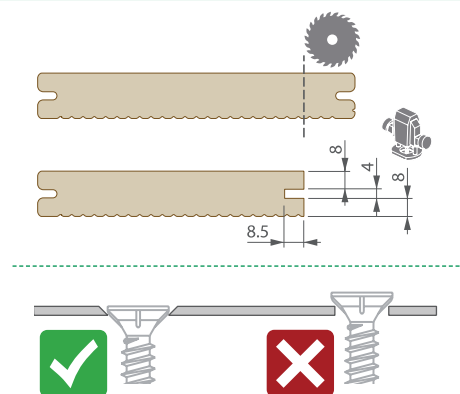
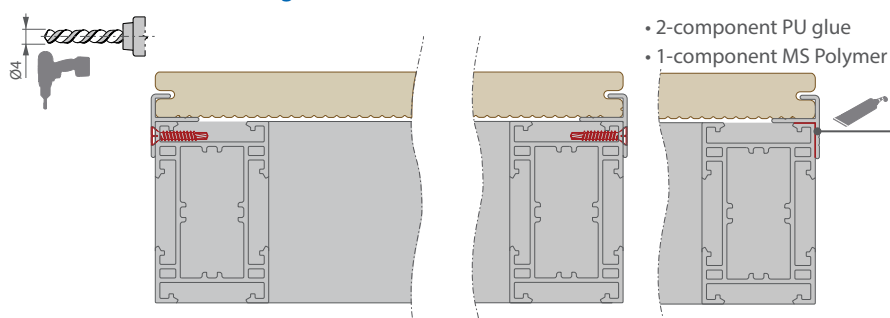




4 Visual aspect | aspect visuel | visueel aspect | visueller Aspekt

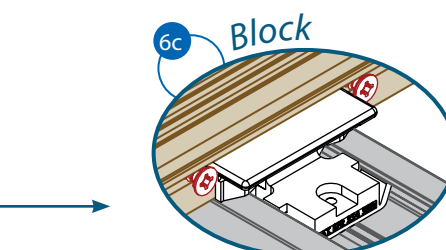
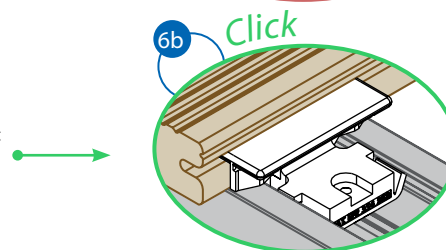
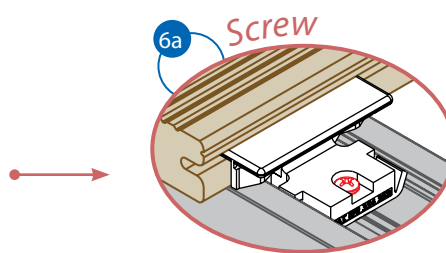
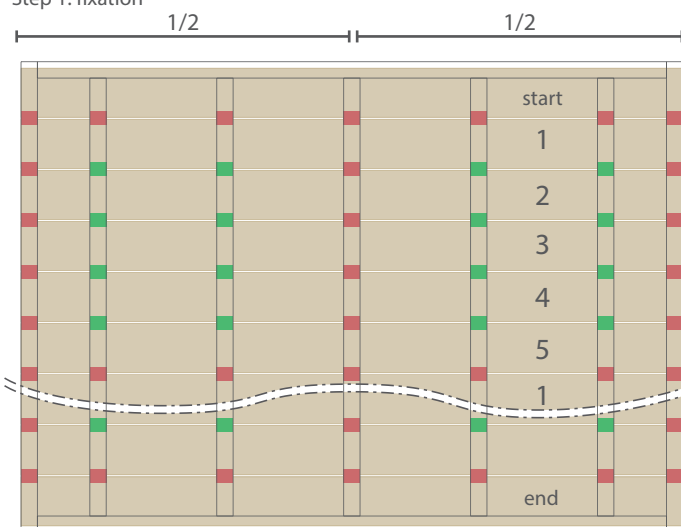


5 Start / end | démarrage / fin | start / einde | Start / Ende



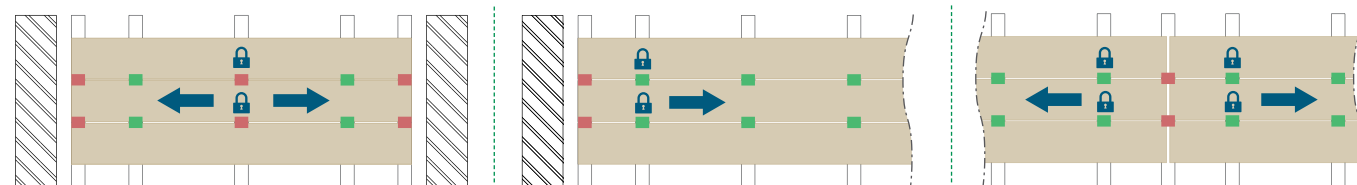
6 Fixation / blocking | fixation / blocage | vastmaken / blokkeren | Fixierung / Blockierung

Step 1: fixation

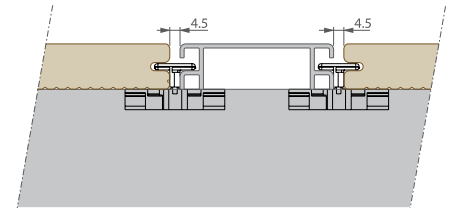
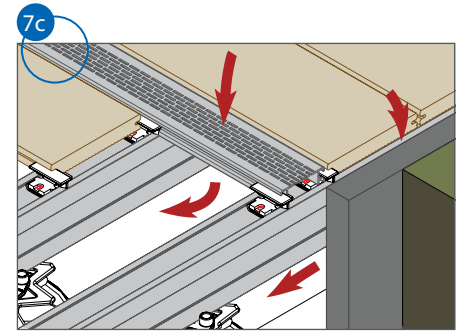
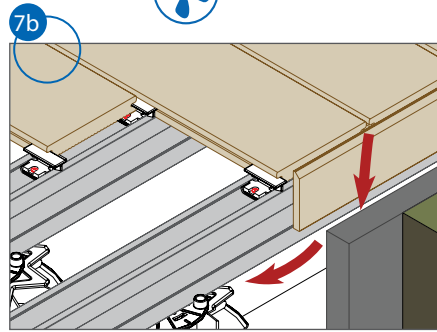
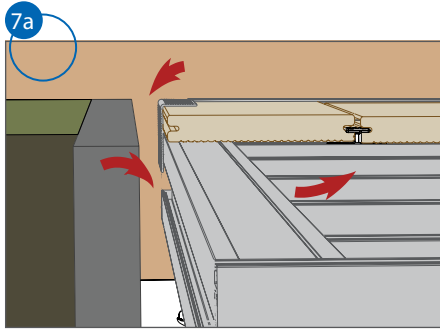


Step 2: blocking

- ➡ direction of expansion ■ screw
🔒 block ■ click

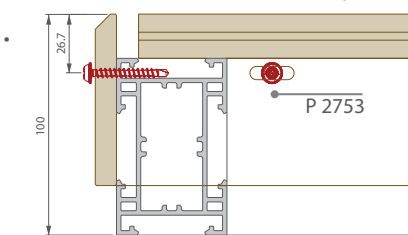
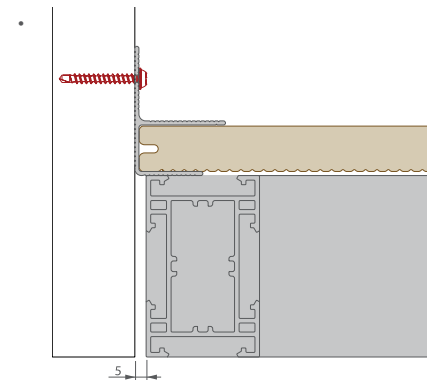
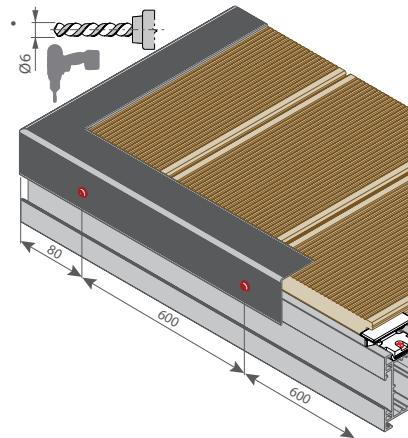
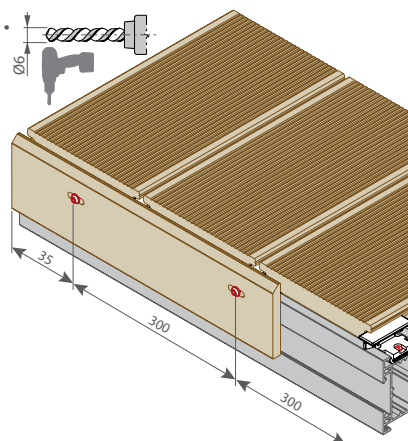


7 Ventilation | ventilation | ventilatie | Belüftung

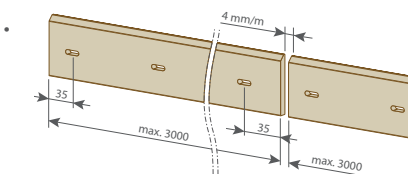
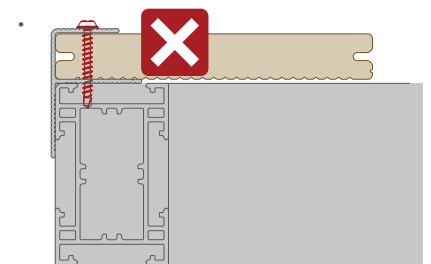
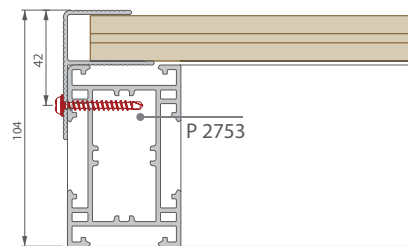


8 Finishing | finition | afwerking | Randabschluß

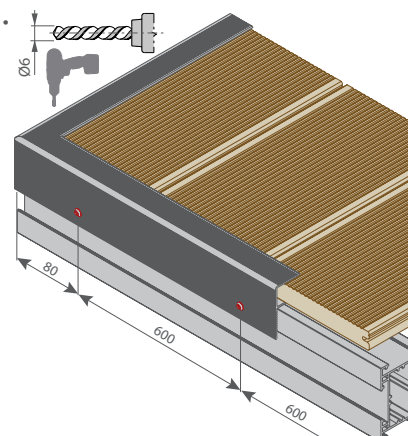
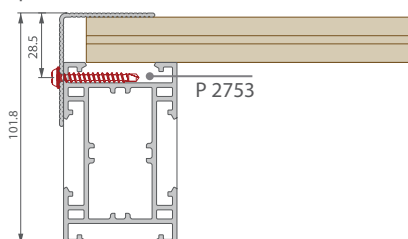
• Option 1 : P 9556



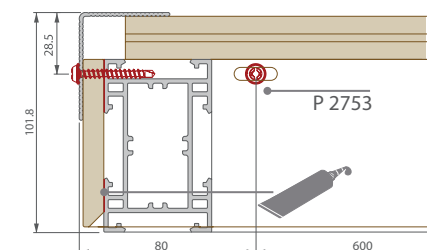
• Option 3 : P 9363



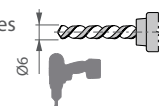
• Option 2 : P 9518



• Option 4 : P 9556 - P 9518



• All profiles



- 2-component PU glue
- 1-component MS Polymer



Terrace Massive

Terrace Massive Pro

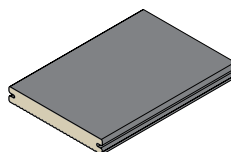
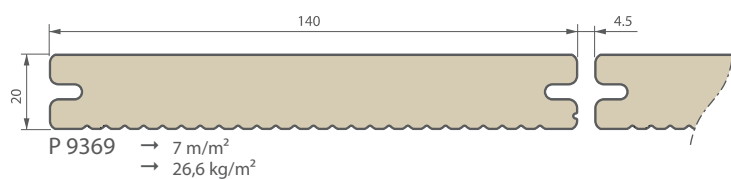
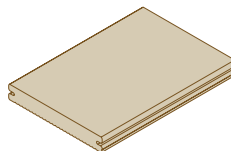
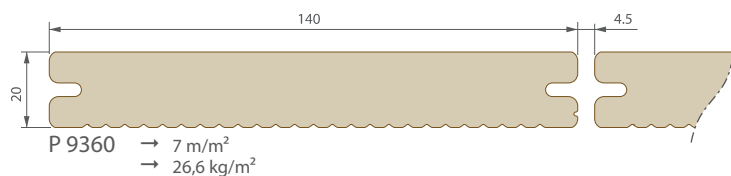


Building a sustainable home

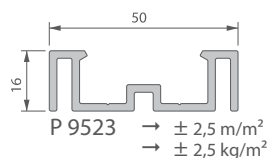
deceuninck

Quick guide P 9360 | P 9369 - P 9523

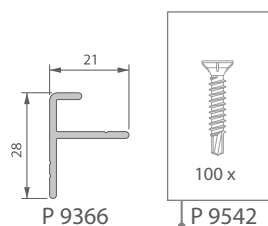
Outdoor living



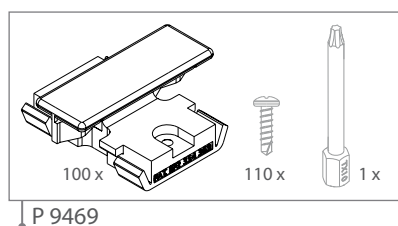
Substructure



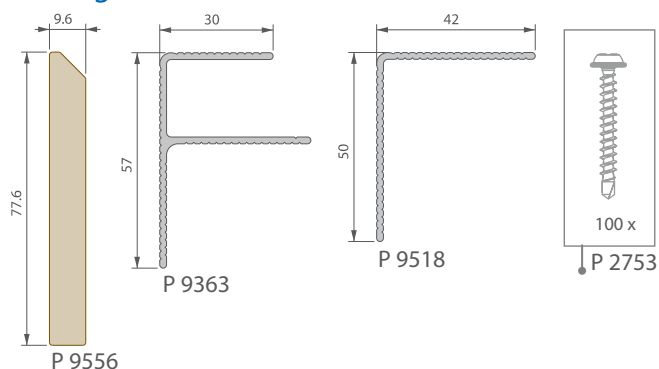
Start/end



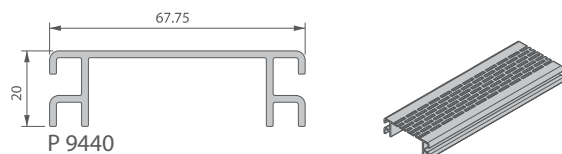
Fixation



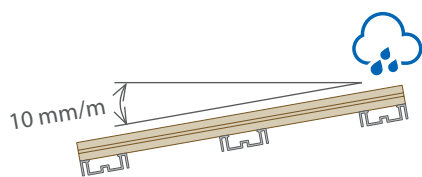
Finishing



Ventilation



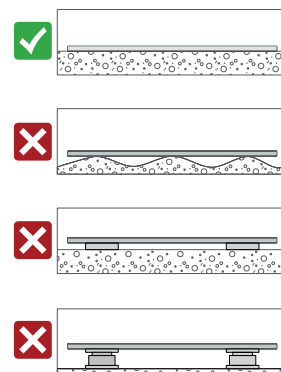
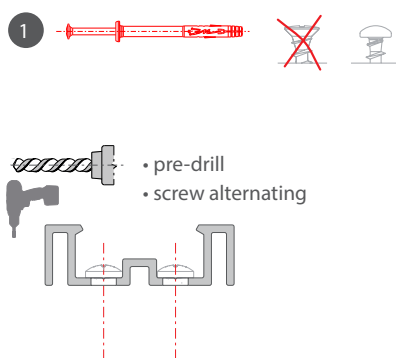
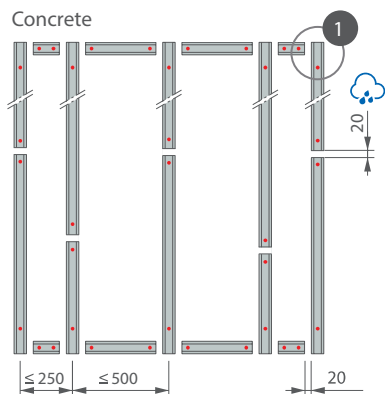
1 Subfloor | support | ondergrond | Untergrund



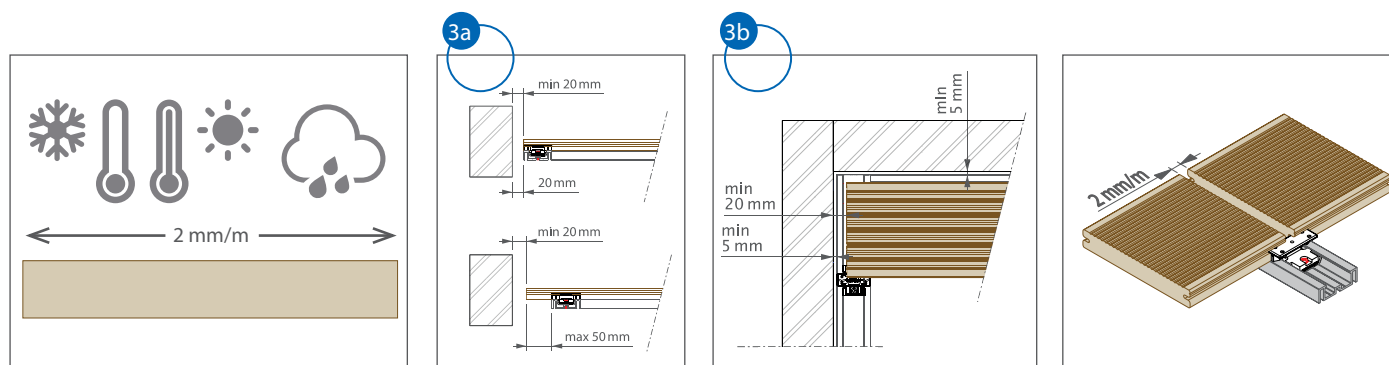
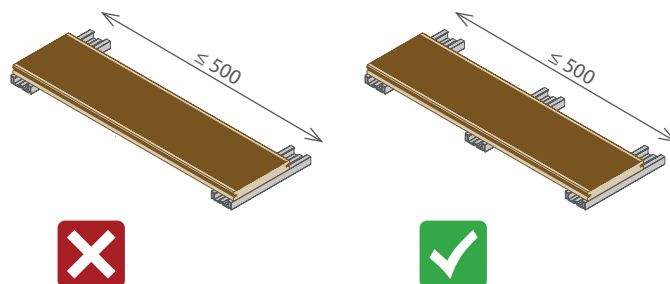
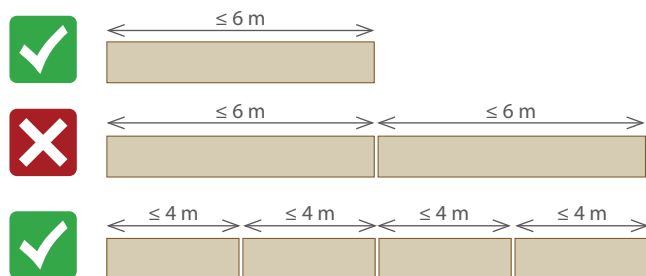
2 Substructure | soubassement | onderstructuur | Unterkonstruktion

Fixed

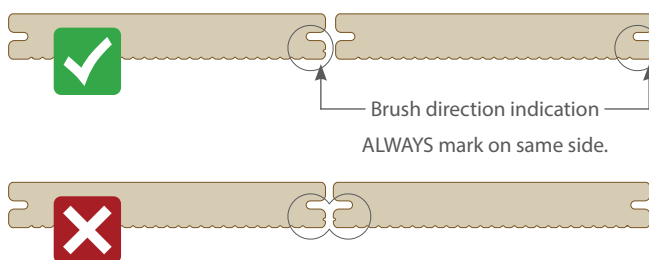
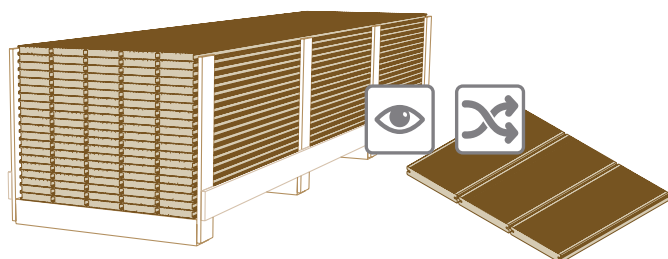
- Concrete

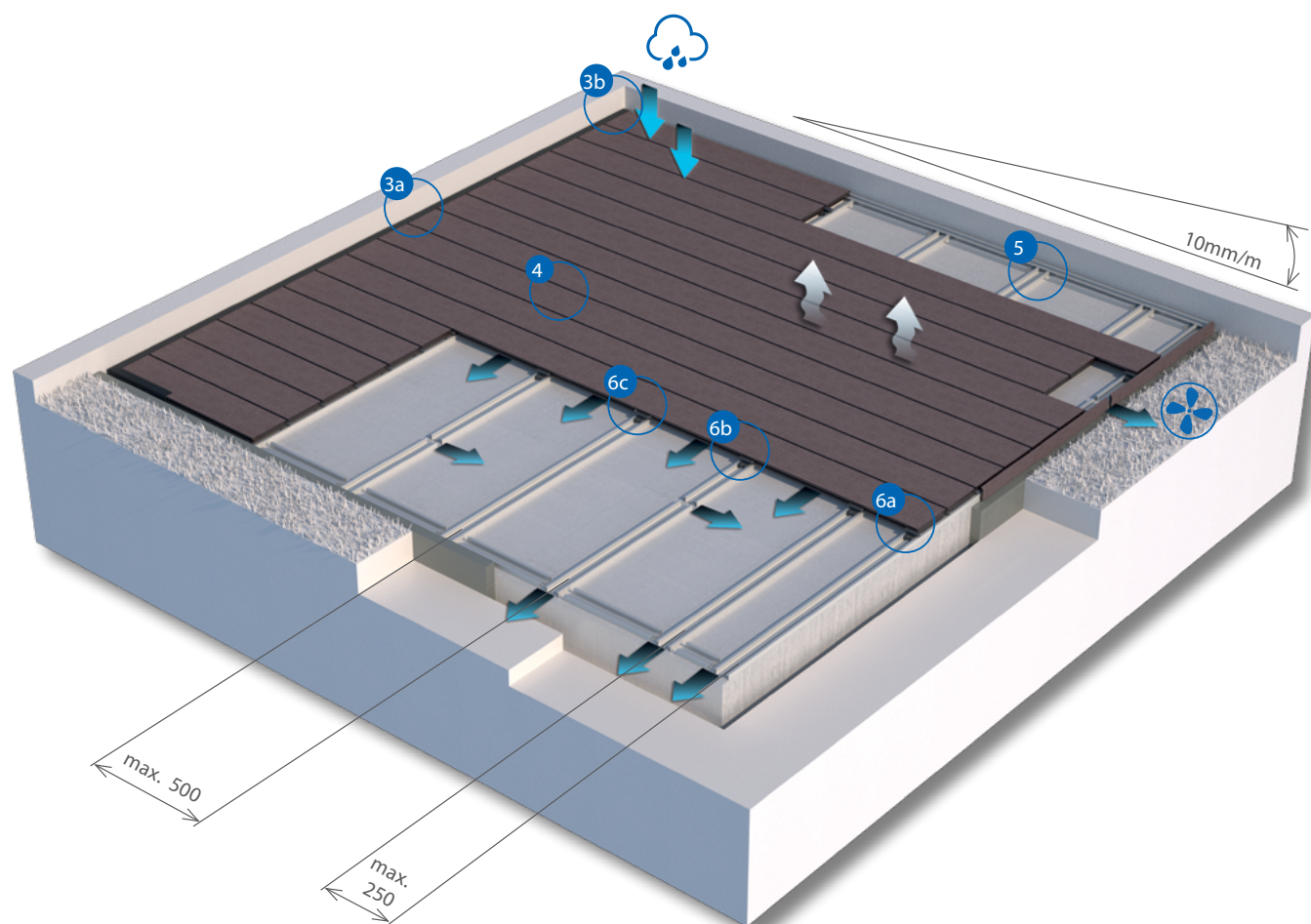


3 General rules | règles générales | algemene richtlijnen | Allgemeine Vorschriften

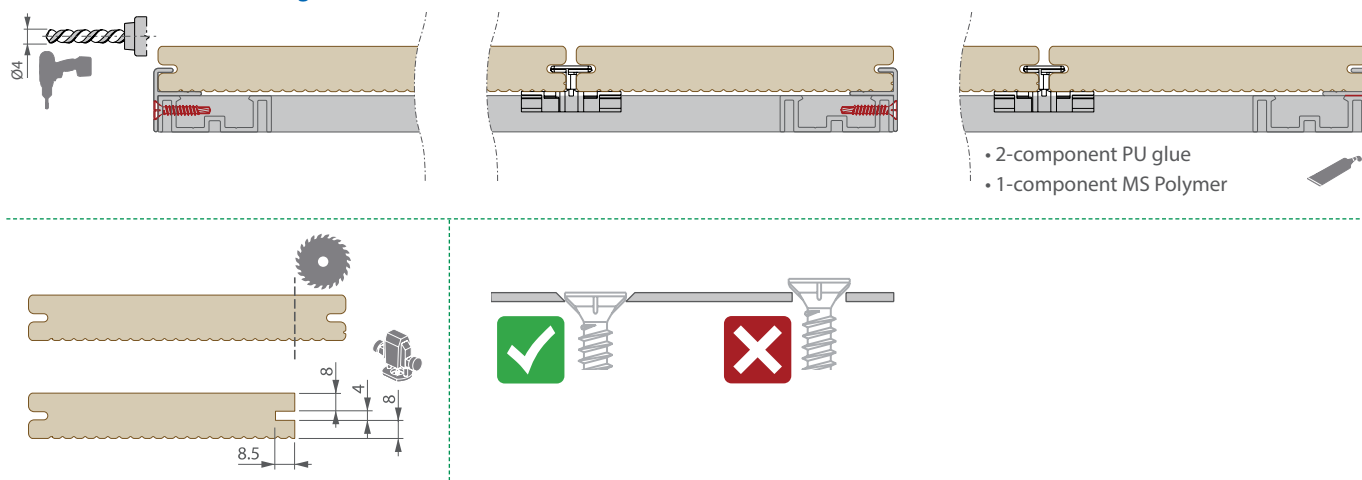


4 Visual aspect | aspect visuel | visueel aspect | visueller Aspekt



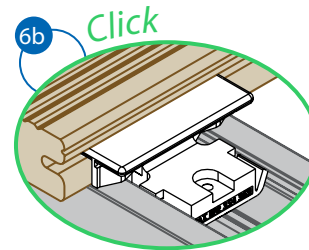
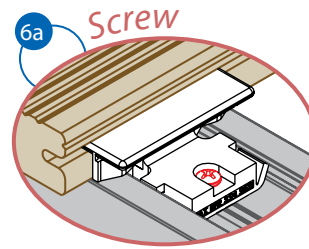
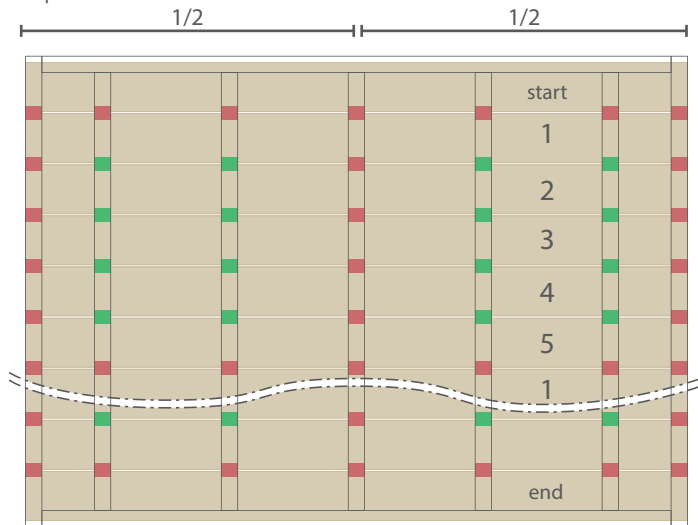


5 Start / end | démarrage / fin | start / einde | Start / Ende



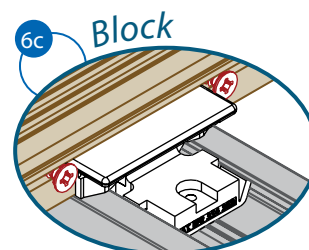
6 Fixation / blocking | fixation / blocage | vastmaken / blokkeren | Fixierung / Blockierung

Step 1: fixation

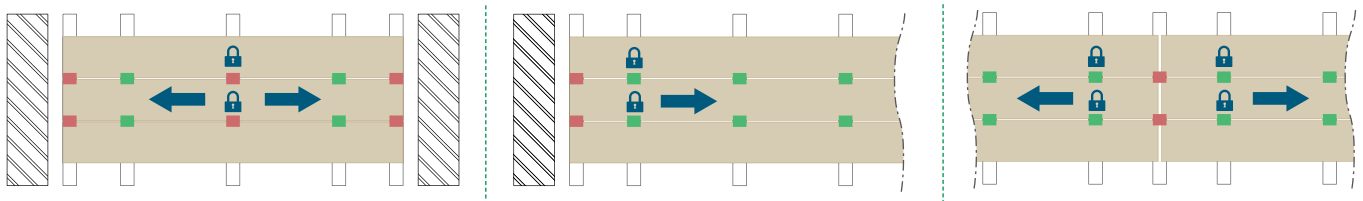


Step 2: blocking

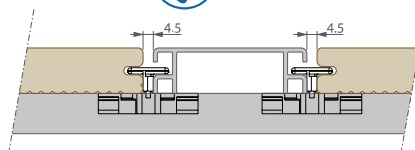
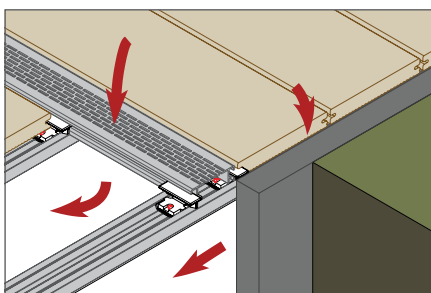
- direction of expansion screw
 block click



- 2 x 3,9 x 19
 • P 9542

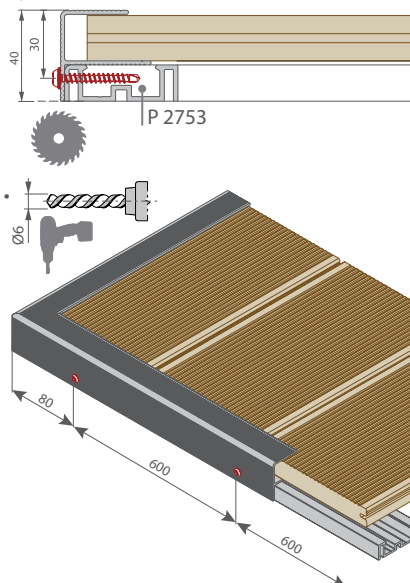


7 Ventilation | ventilation | ventilatie | Belüftung

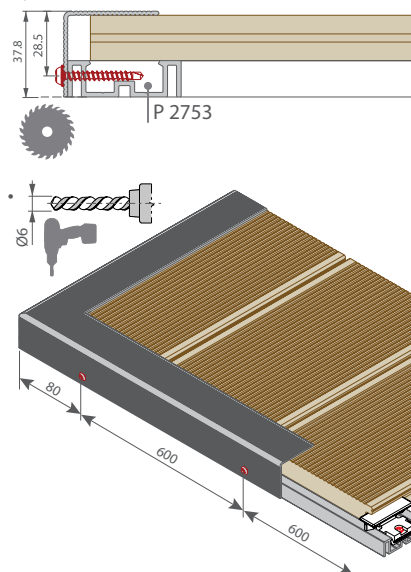


8 Finishing | finition | afwerking | Randabschluß

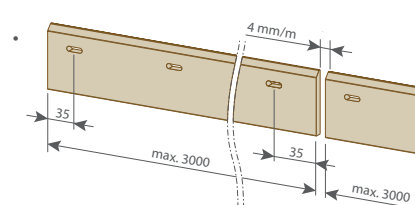
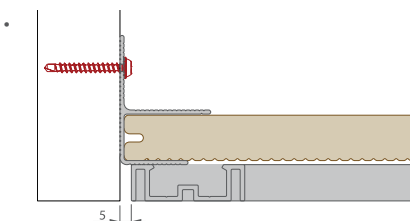
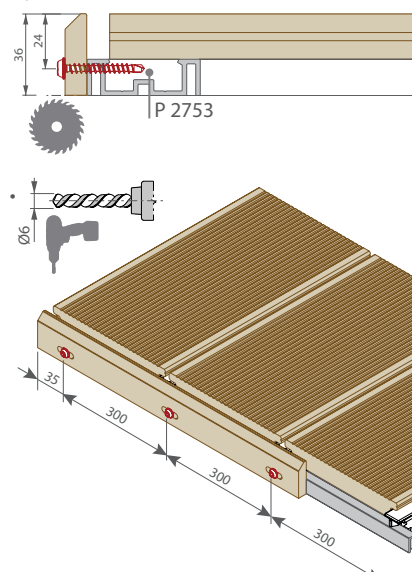
• Option 1 : P 9363



• Option 2 : P 9518



• Option 3 : P 9556



Terrace Massive

Terrace Massive Pro

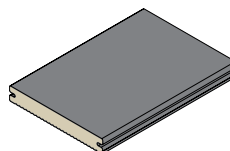
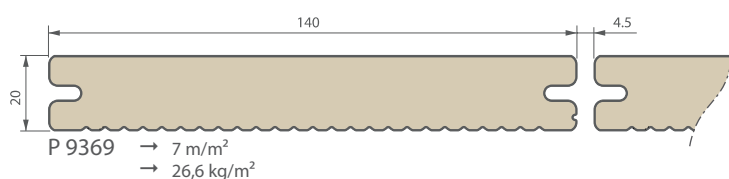
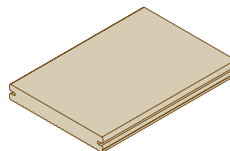
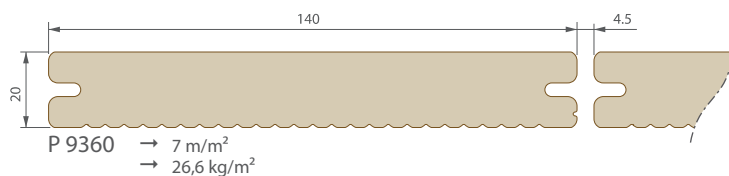


Building a sustainable home

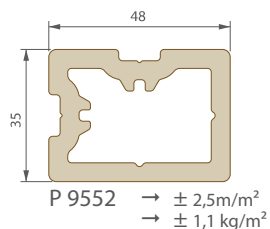
deceuninck

Quick guide P 9360 | P 9369 - P 9552

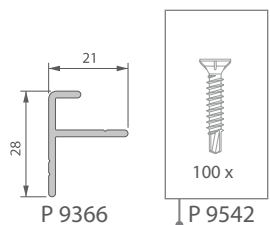
Outdoor living



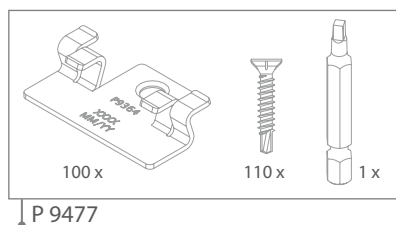
Substructure



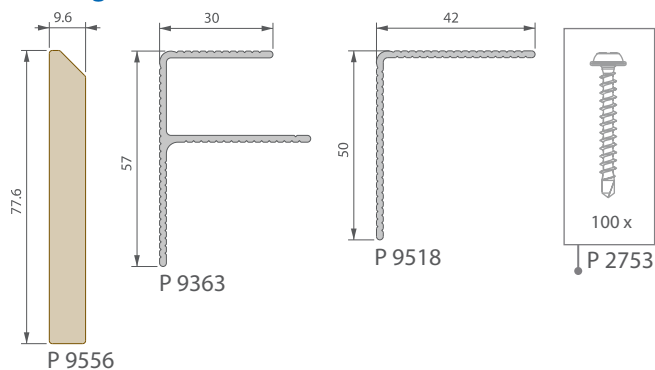
Start/end



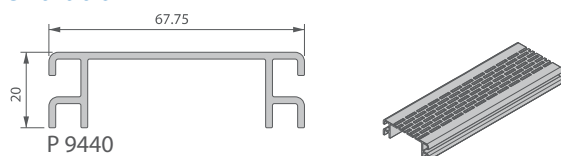
Fixation



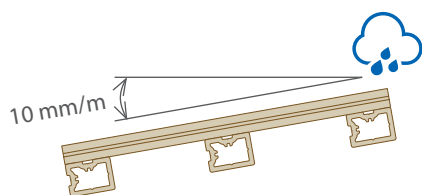
Finishing



Ventilation



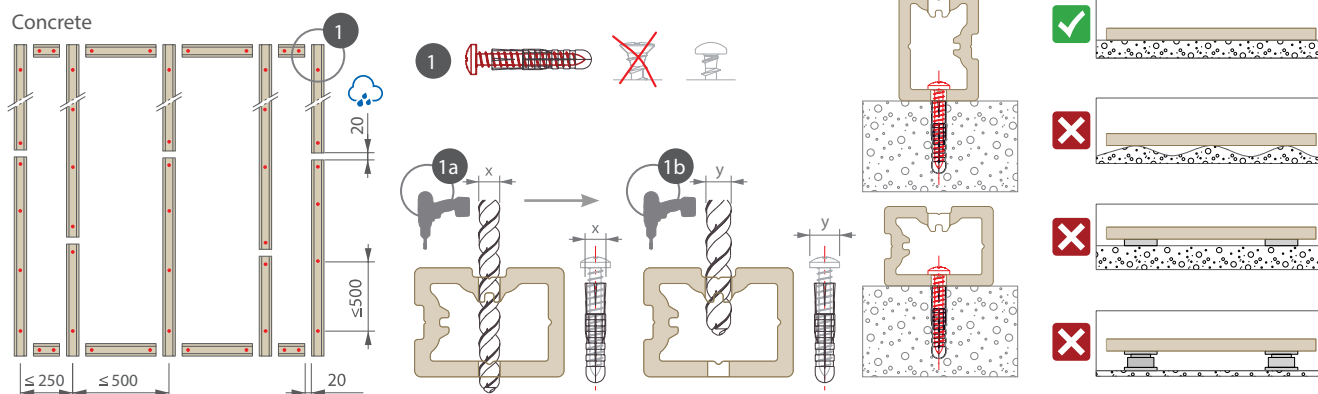
1 Subfloor | support | ondergrond | Untergrund



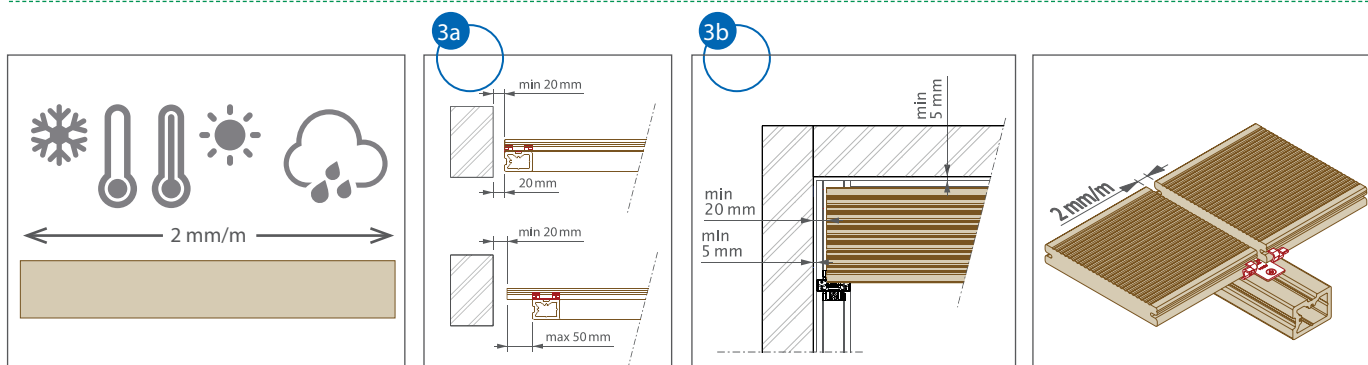
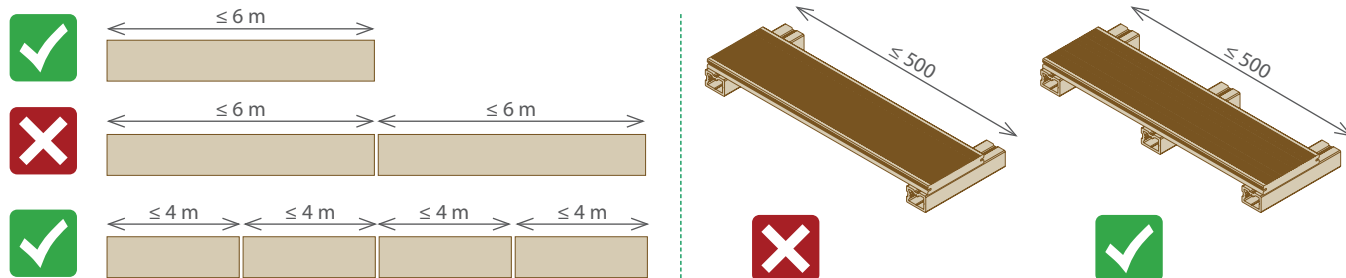
2 Substructure | soubassement | onderstructuur | Unterkonstruktion

Fixed

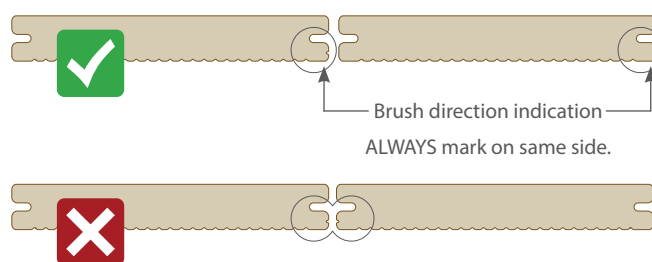
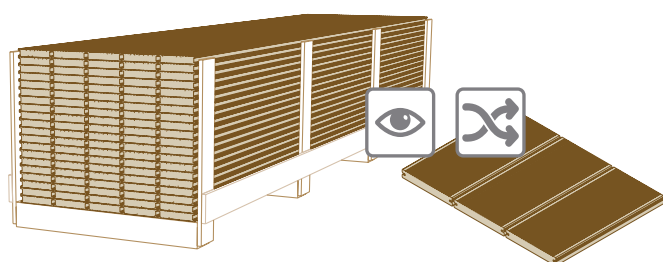
• Concrete

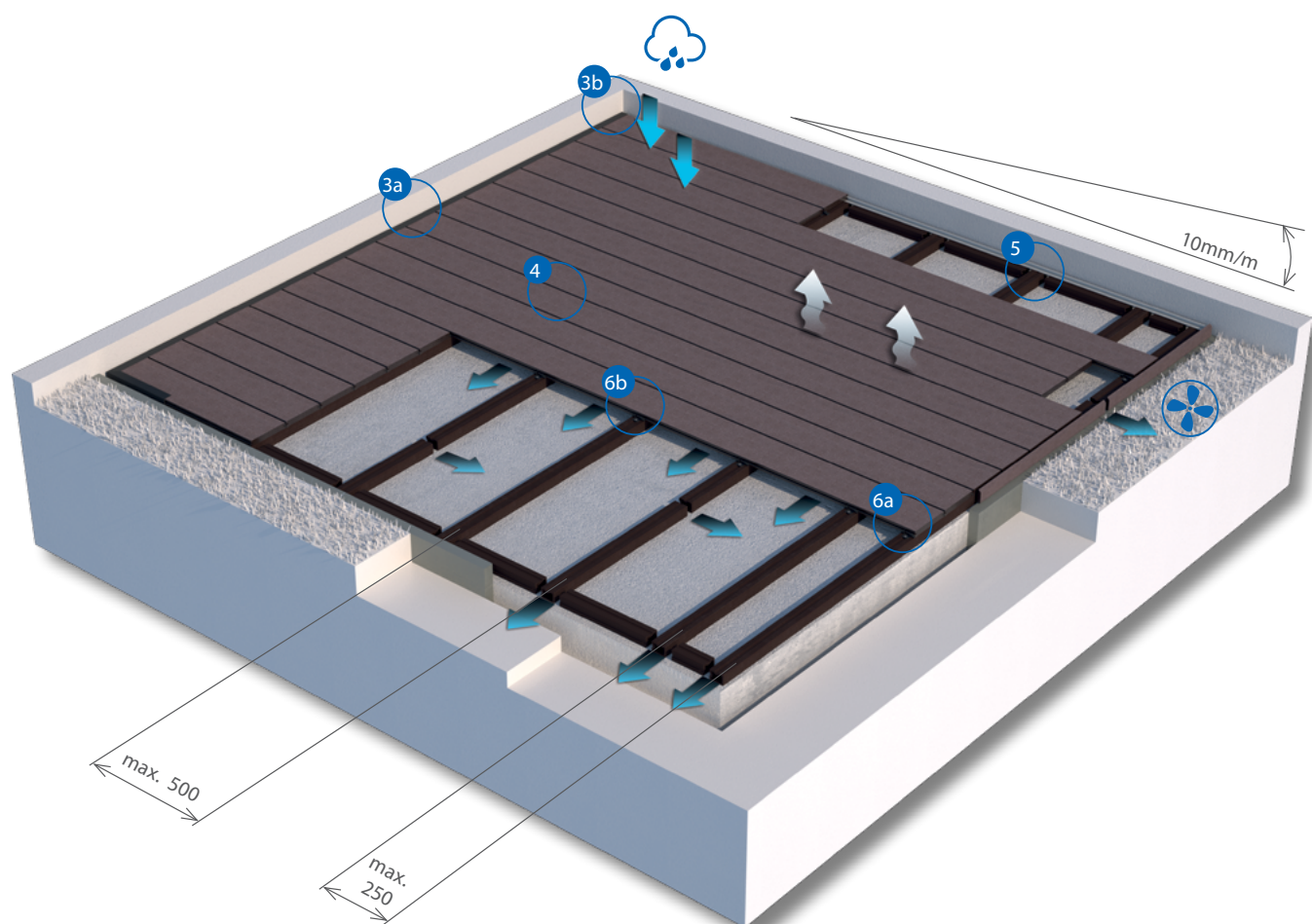


3 General rules | règles générales | algemene richtlijnen | Allgemeine Vorschriften

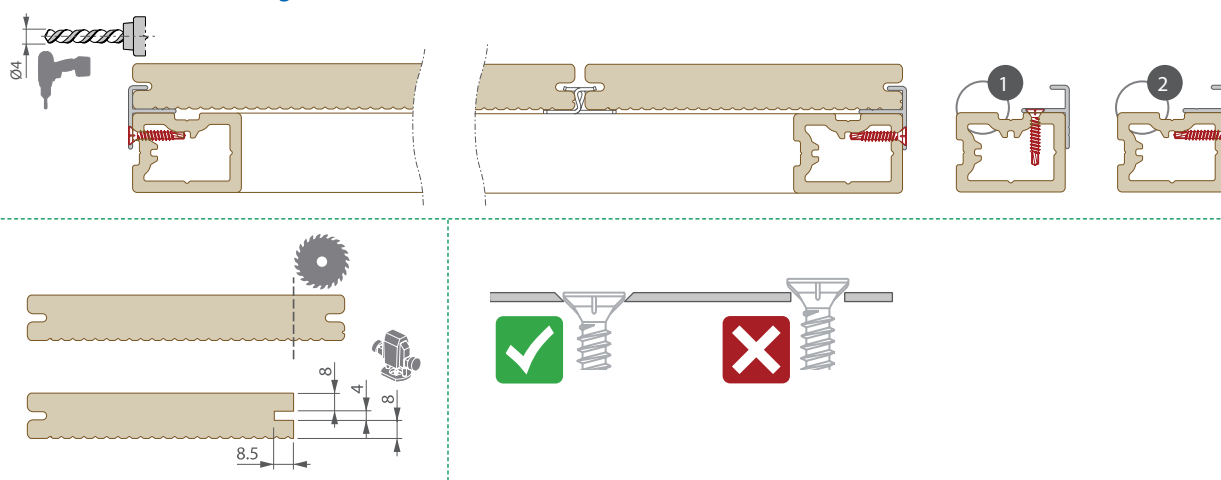


4 Visual aspect | aspect visuel | visueel aspect | visueller Aspekt



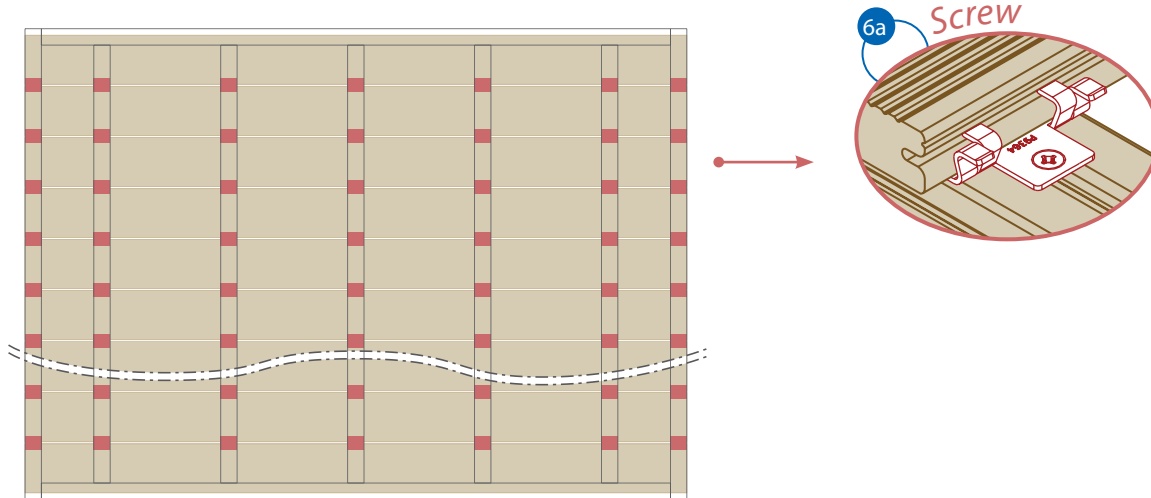


5 Start / end | démarrage / fin | start / einde | Start / Ende



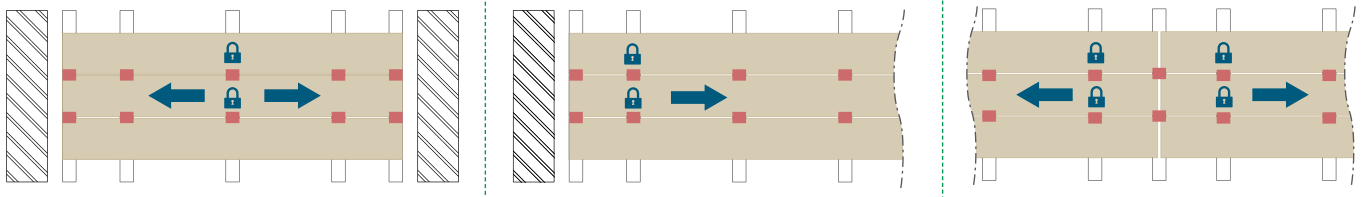
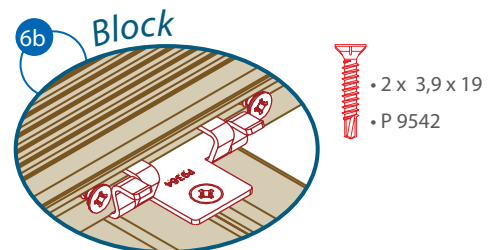
6 Fixation / blocking | fixation / blocage | vastmaken / blokkeren | Fixierung / Blockierung

Step 1: fixation

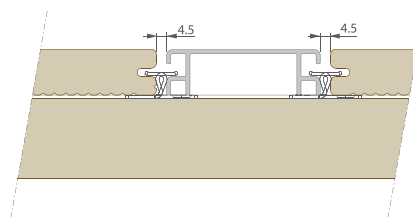
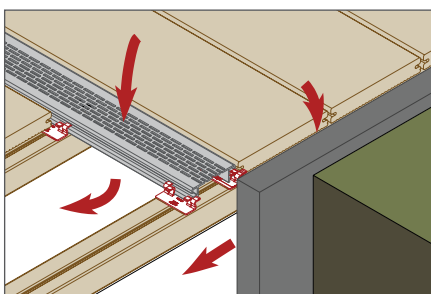


Step 2: blocking

➡ direction of expansion ■ screw
 🔒 block

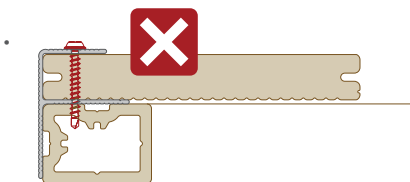
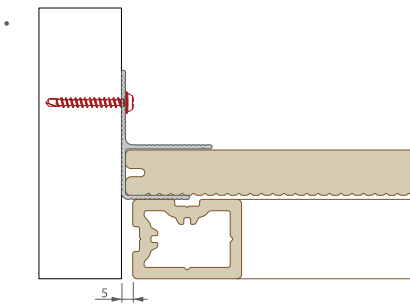
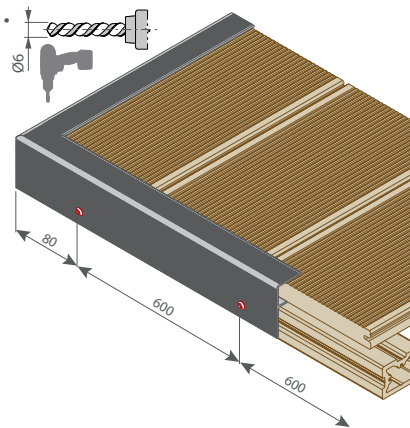
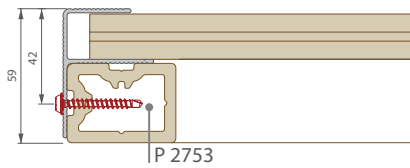


7 Ventilation | ventilation | ventilatie | Belüftung

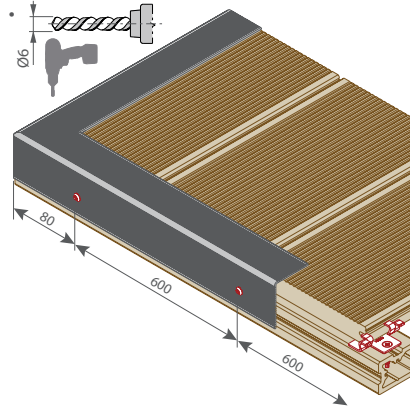
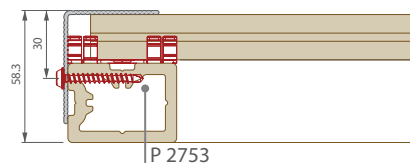


8 Finishing | finition | afwerking | Randabschluß

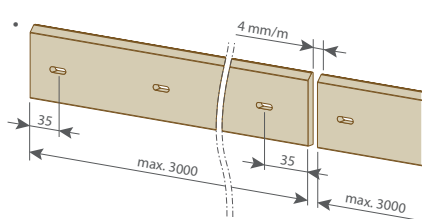
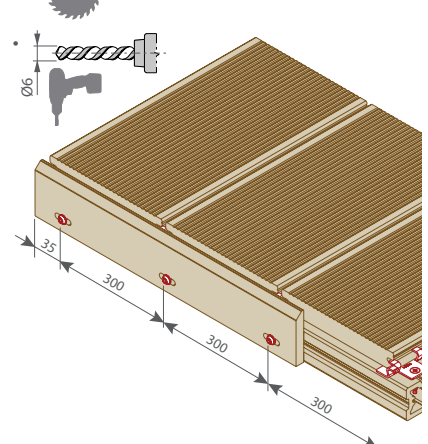
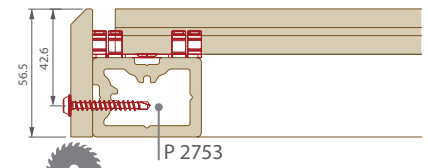
• Option 1 : P 9363



• Option 2 : P 9518



• Option 3 : P 9556



Terrace Massive

Terrace Massive Pro

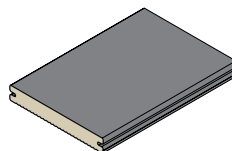
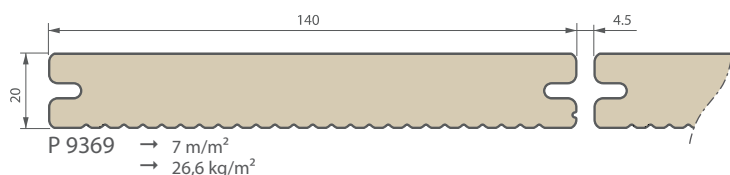
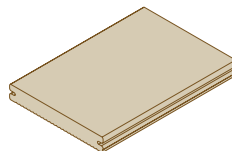
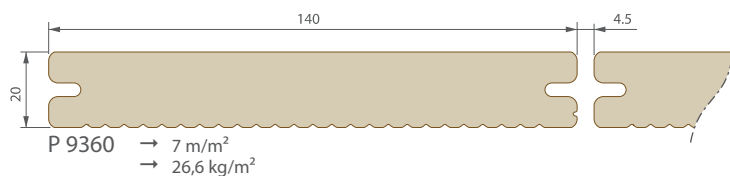


Building a sustainable home

deceuninck

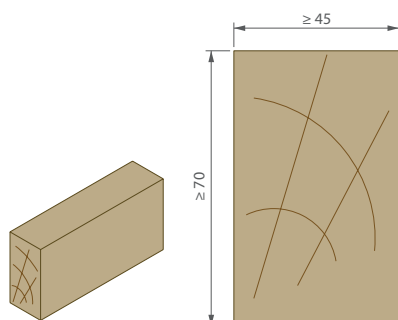
Quick guide P 9360 | P 9369 - wood

Outdoor living



Substructure

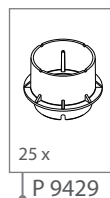
- Take advice from your wood supplier.
- Durability class 1 (France class 4).
- NOT IN RANGE, only recommendation.



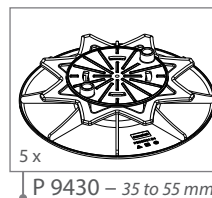
Fixed



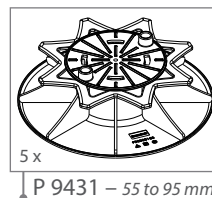
Floating



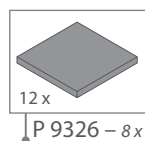
P 9429



P 9430 – 35 to 55 mm

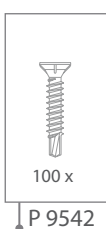
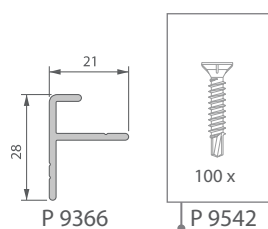


P 9431 – 55 to 95 mm

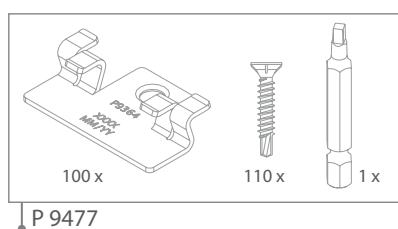


P 9326 – 8 x 90 x 90 mm

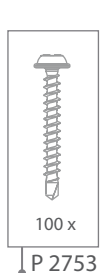
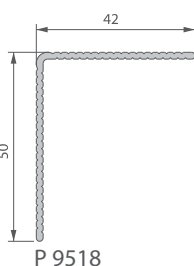
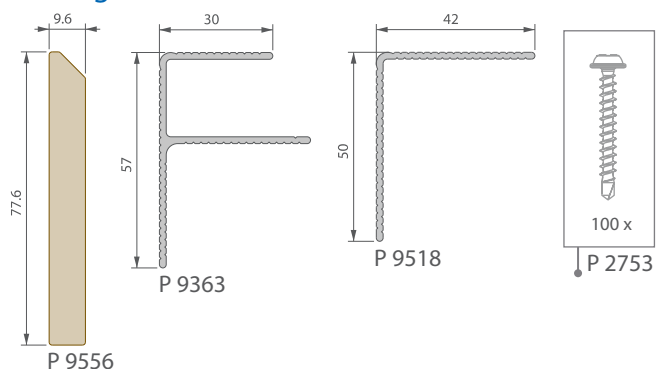
Start/end



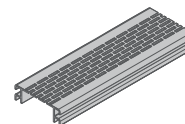
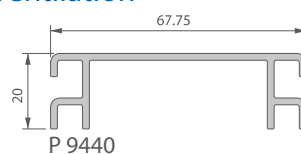
Fixation



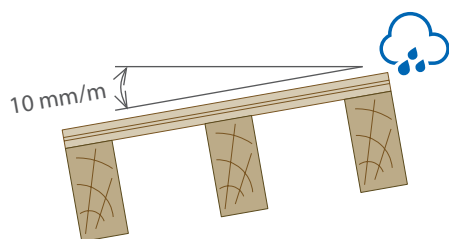
Finishing



Ventilation



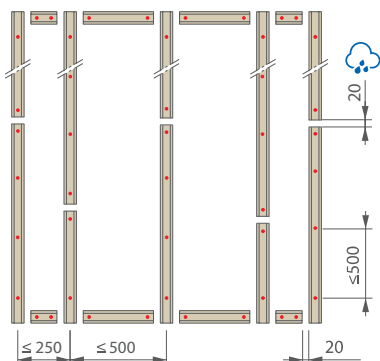
1 Subfloor | support | ondergrond | Untergrund



2 Substructure | soubassement | onderstructuur | Unterkonstruktion

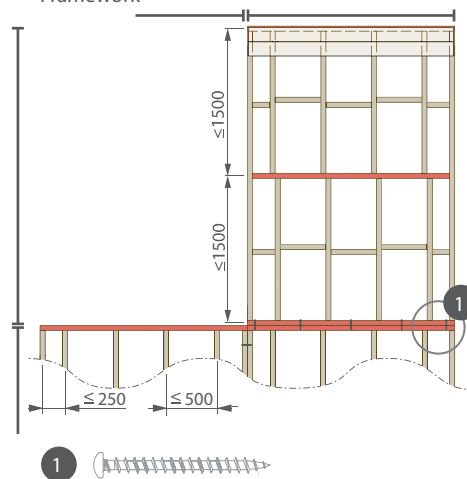
Fixed: min. 45 x 70 mm

- Concrete

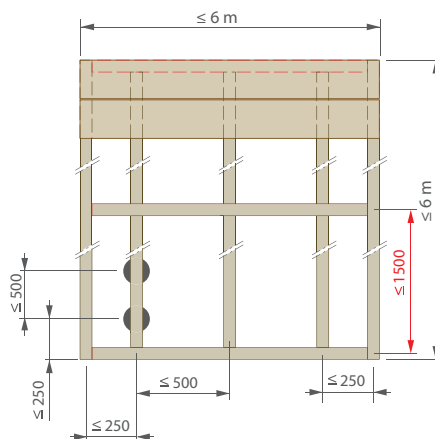


Floating: min. 50 x 100 mm

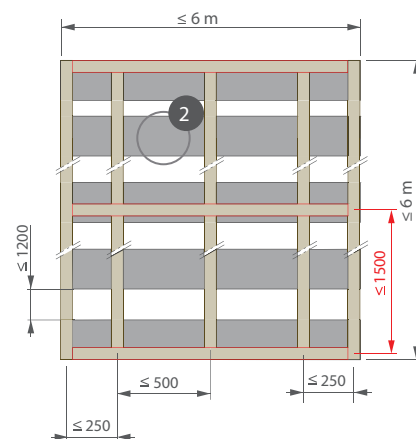
- Framework



- P 9430 - P 9431 / P 9326

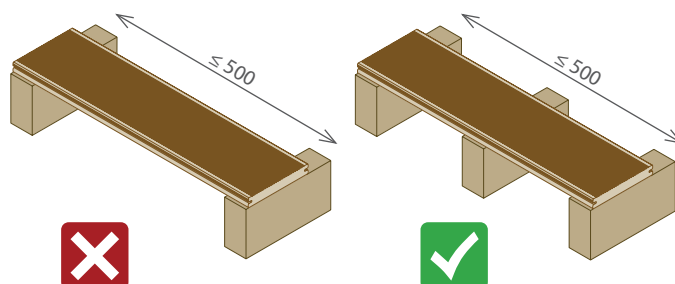
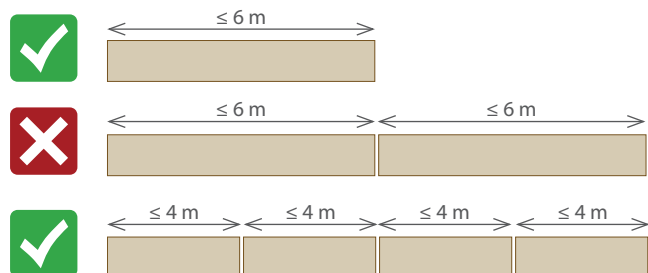


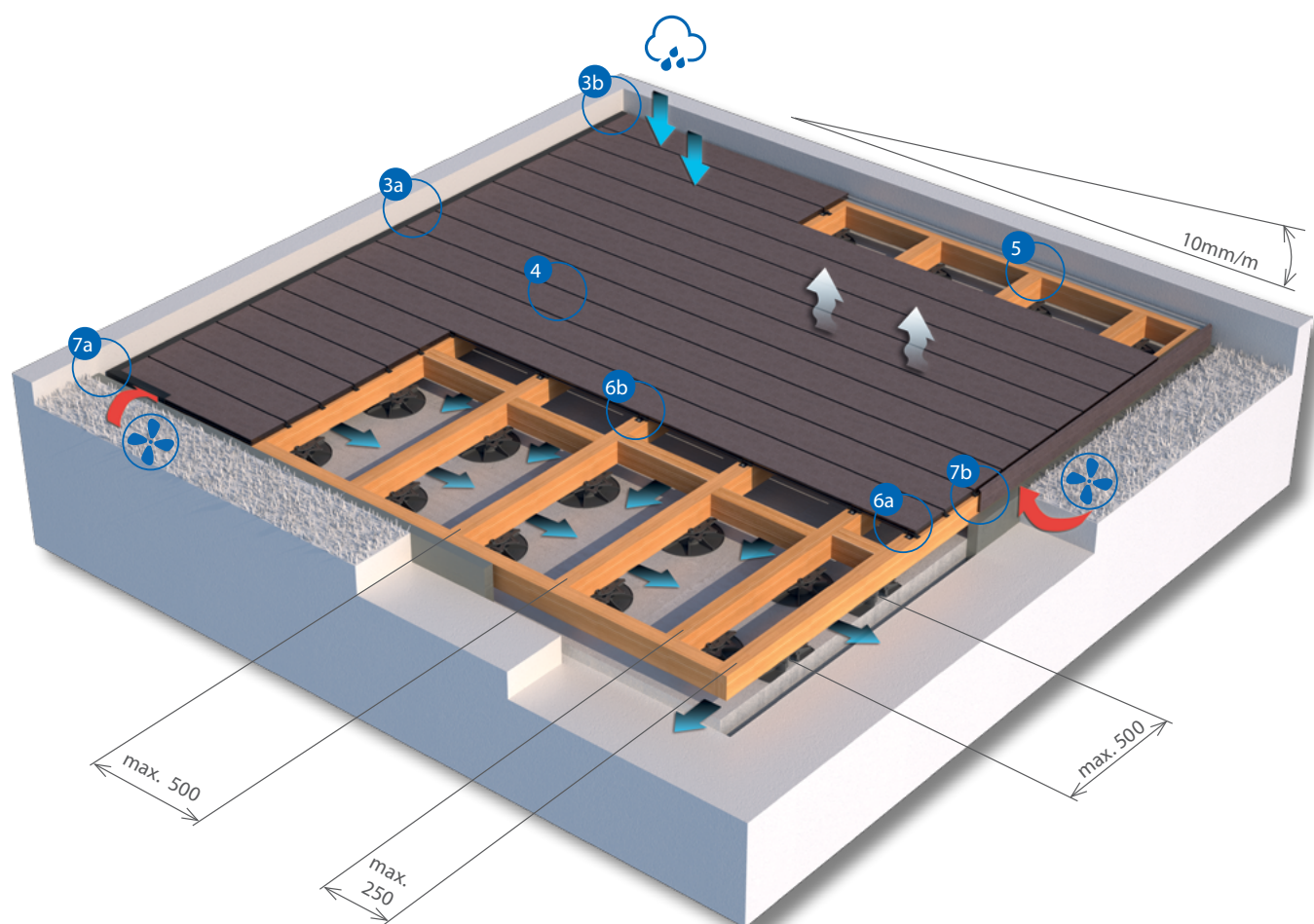
- Concrete tiles



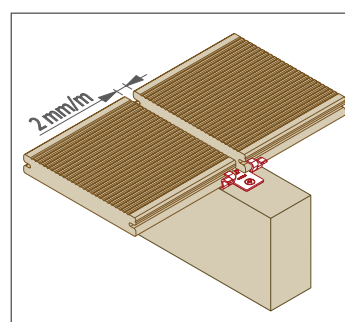
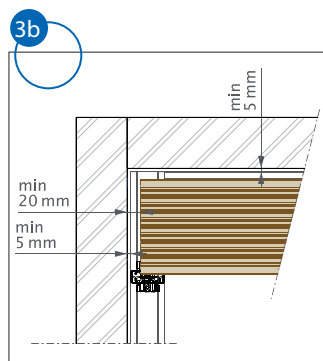
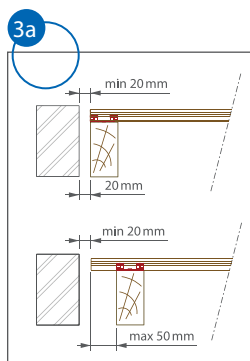
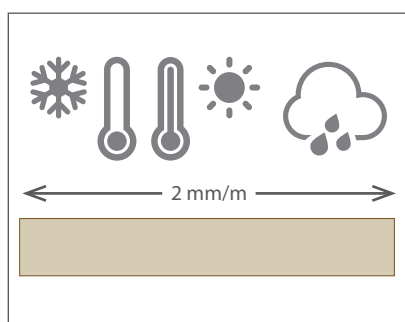
2 40 x 40 x 5 cm – 100 x 25 x 5 cm

3 General rules | règles générales | algemene richtlijnen | Allgemeine Vorschriften

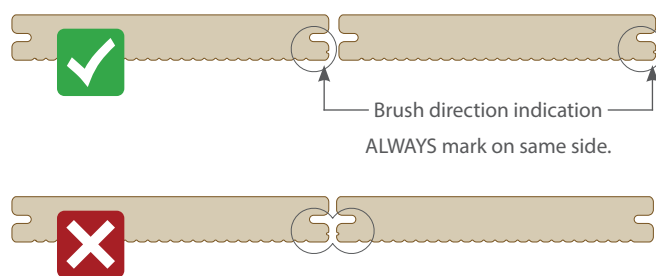
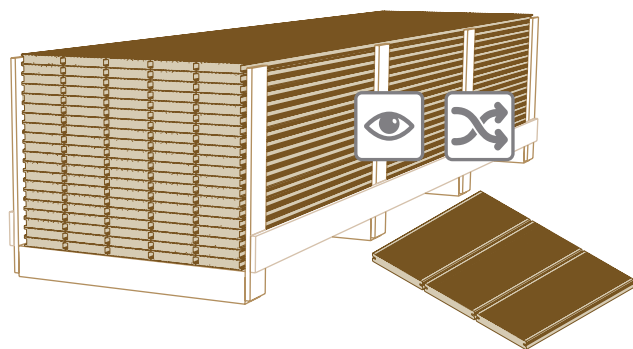




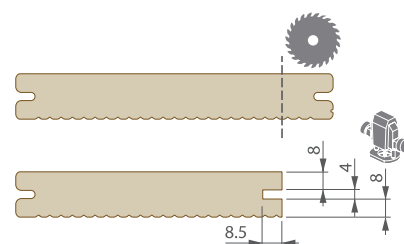
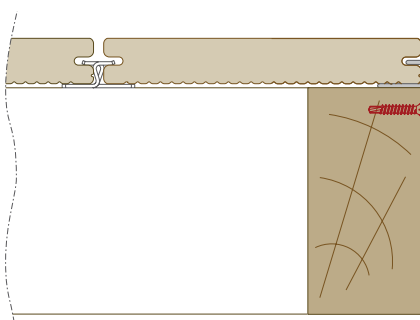
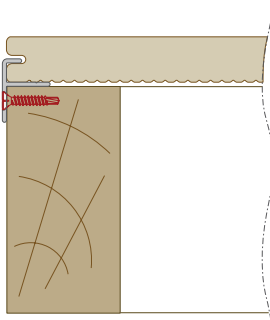
3 General rules | règles générales | algemene richtlijnen | Allgemeine Vorschriften



4 Visual aspect | aspect visuel | visueel aspect | visueller Aspekt

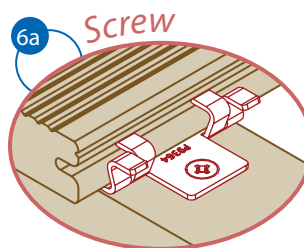
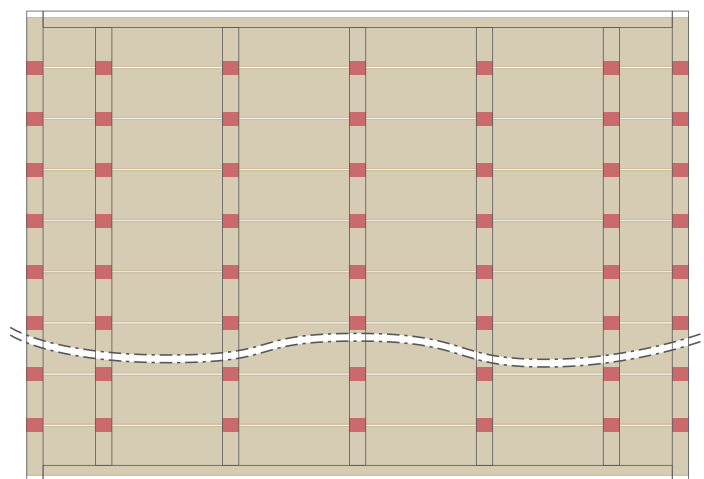


5 Start / end | démarrage / fin | start / einde | Start / Ende



6 Fixation / blocking | fixation / blocage | vastmaken / blokkeren | Fixierung / Blockierung

Step 1: fixation

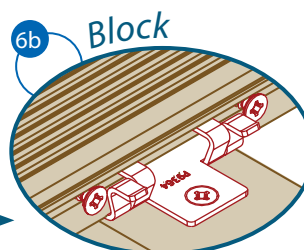


Step 2: blocking

➡ direction of expansion

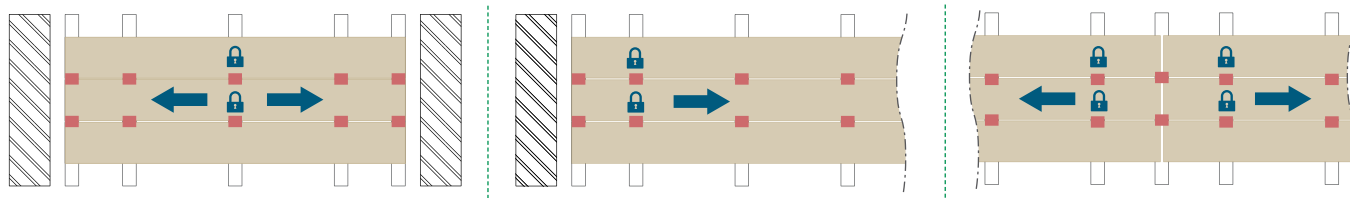
🔒 block

■ screw

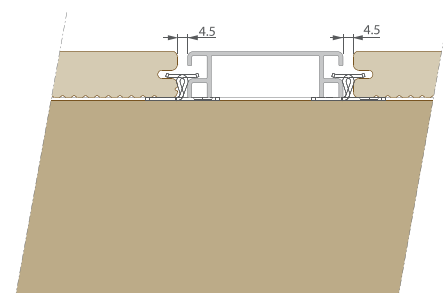
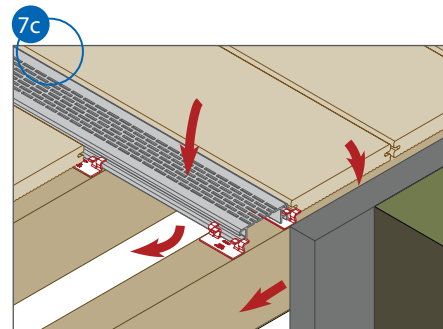
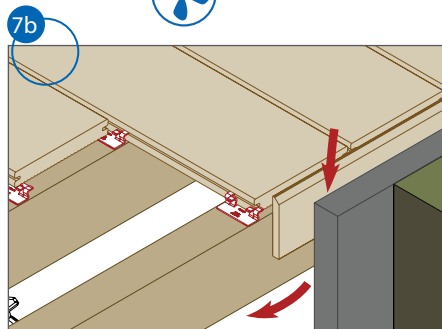
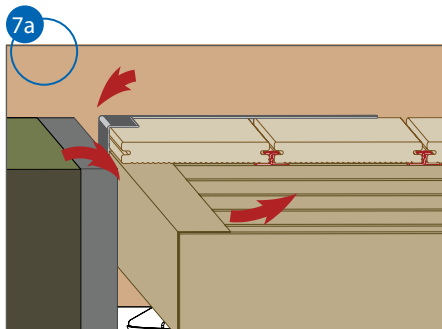


• 2 x 3,9 x 19

• P 9542

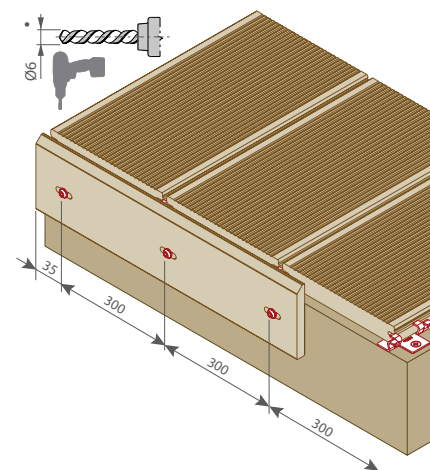
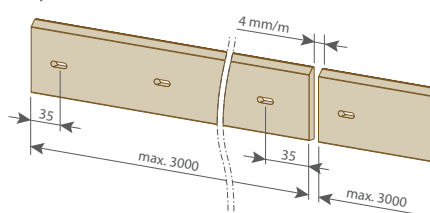


7 Ventilation | ventilation | ventilatie | Belüftung

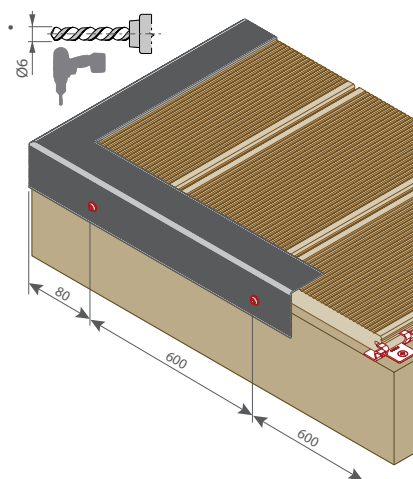
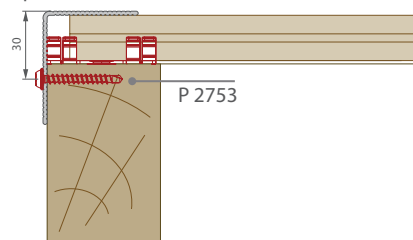


8 Finishing | finition | afwerking | Randabschluß

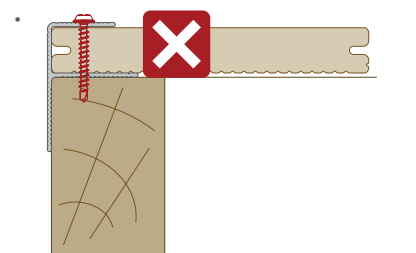
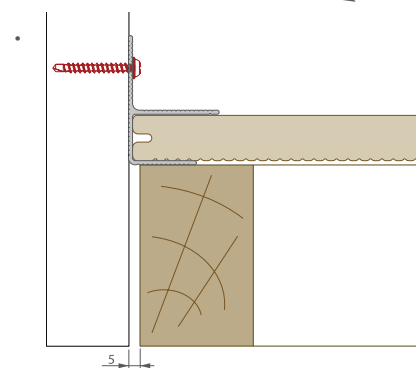
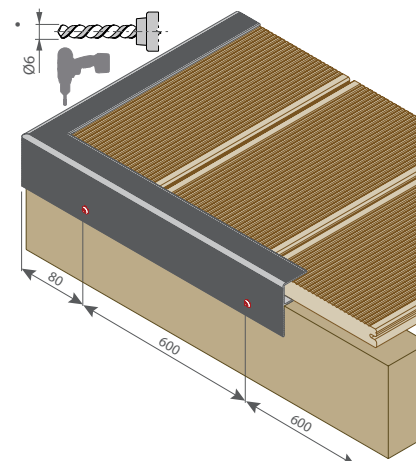
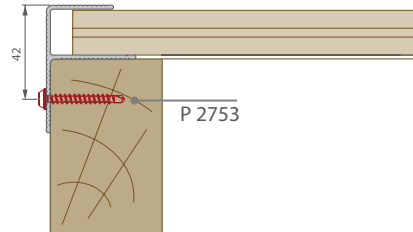
- Option 1 : P 9556



- Option 2 : P 9518



- Option 3 : P 9363



Adjustable pedestal Quick guide



innovation



ecology



design

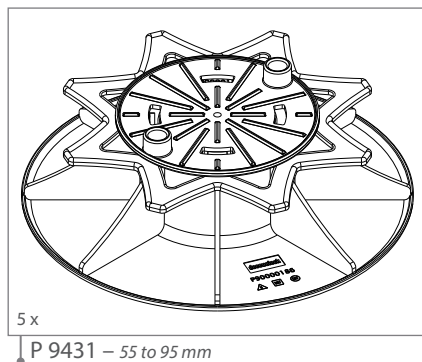
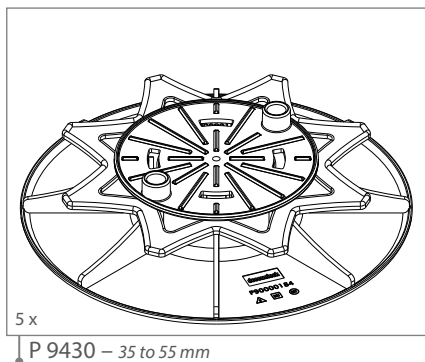
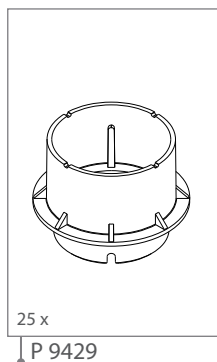
Building a sustainable home

deceuninck

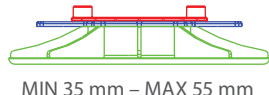
Accessories

Outdoor living

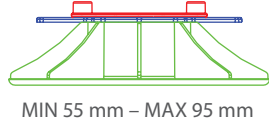
Adjustable pedestal terrace | plot réglable pour terrasse | terrasverhoger | Justierfuß für Terrassen



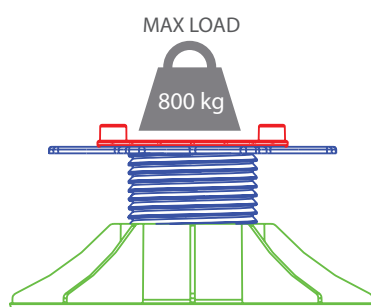
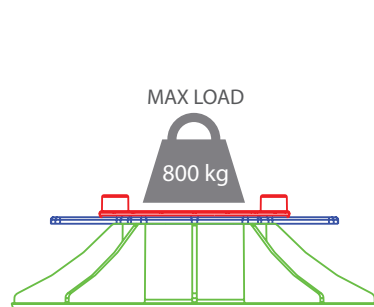
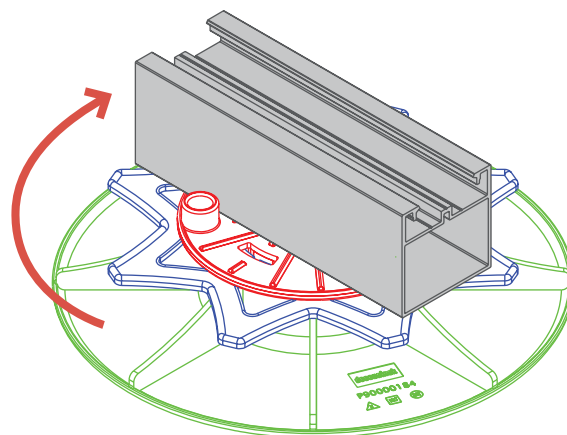
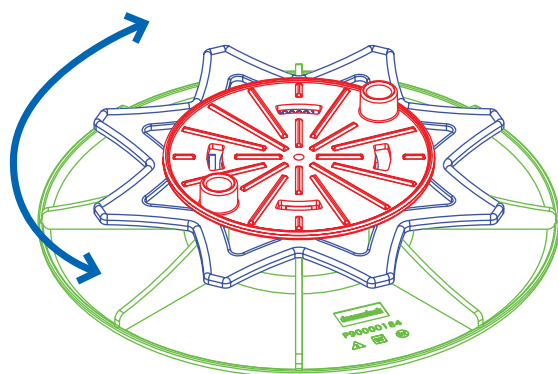
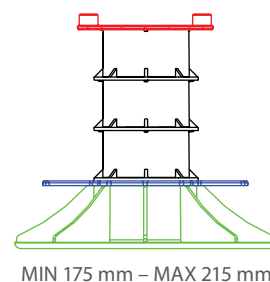
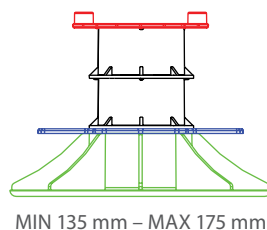
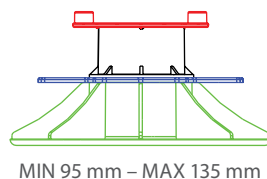
• P 9430



• P 9431



• P 9431 + P 9429



EN | Always check the maximum load capacity of the subfloor.

FR | Toujours vérifier la capacité de charge maximale du sol support.

NL | Controleer altijd het maximale draagvermogen van de ondergrond.

DE | Überprüfen Sie immer die maximale Tragfähigkeit des Untergrundes.

Terrace Massive Pro

4 Maintenance

The logo for Deceuninck, featuring the brand name in white lowercase letters on a blue rectangular background.

1. Care
2. Cleaning

01/2017 - V1.0 - published work© 2017 - Deceuninck

Deceuninck composed this brochure with the utmost care. Nevertheless, data contained in this brochure might be outdated, incomplete, and/or inaccurate. No rights, claims, commitments or guarantees can be derived from the presented information. The texts, photographs, logos, pictures and brands (among which Deceuninck, Linktrusion and Twinson included) are covered by intellectual property rights. They are exclusive property of Deceuninck. Nothing included in this publication can, fully or partially, in any way be reproduced without prior permission.

The available profiles and accessories may vary depending on your location. To find out which profiles and accessories are available in your area, see www.deceuninck.com or contact a local dealer.

4.1 Care

- Barbeque grills: sources of high heat should not be placed directly on the deck. When any risk of falling hot charcoal, use a heat resistant underlay.
- Snow and ice removal: use a non-metallic shovel to remove snow and ice.
- Colour fading: although our Terrace Massive Pro decking has a high resistance against UV colour degradation, it is unavoidable that products change in colour over time.

In order to obtain an even and uniform weathering of a Terrace Massive Pro decking, it is recommended to move objects like flower pots or umbrella feet from time to time.

4.2 Cleaning

The deck should be cleaned on a regular basis with clear water or a mild soap diluted with water and a soft brush. This should help prevent the build-up of any moss-like deposits.

Although a high stain resistance, wipe away stains within an acceptable time frame (24 hrs).

Terrace Massive Pro material has been extensively tested on a large number of products that it may come into contact with during its application. There are 3 categories:

- Is **resistant to**: This product type leaves no permanent mark on the material or the stain disappears in a short space of time after outside exposure. (fig. 1)
- Is **less resistant to**: This product type leaves a light mark on the material. (fig. 2)
- Is **not resistant to**: This product type leaves marks on the material that remains clearly visible. (fig. 3)

| RESISTANT TO |
|--|
| PVC Cement Wipe-off P 965 |
| Twinson O-clean P 9545 |
| PVC Cleanup P 956 (transparent polish) |
| White spirit |
| Ethanol |
| Naphta |
| NaCl solution (sodiumchloride solution - max conc. at 23°C) |
| Graffiti cleaner P 995 (Celliose, SDI nettoyant graffiti S6 - 134.000) |
| Instanet (with alcohol) |

fig.1: Terrace Massive Pro is resistant to

| LESS RESISTANT TO |
|---|
| Liquid bleach (sodium hypochlorite 47°, min. 15% active chlorine) |
| Graffiti cleaner (3M GR1500) |

fig.2: Terrace Massive Pro is less resistant to

| NOT RESISTANT TO |
|--|
| Acetone |
| Graffiti cleaner (ANAF PVC cleaner) |
| PVC protect P 960 (antistaticum) |
| Rubson (remover of insulation foam; supplier Henkel) |

fig.3: Terrace Massive Pro is not resistant to

Consult the chemical resistance and cleanability document if marks have not disappeared or dried immediately.

For each generic name there are different products that demand special cleaning instructions. (fig. 4)

| GENERIC NAME | PRODUCT | SPECIAL CLEANING INSTRUCTIONS if not removed immediately |
|---|---------|--|
| Vegetable, animal and other fats & oils | Food | Clean with clear water or a mild soap diluted with water and a soft brush. |
| | Oil | |
| | ... | |

| GENERIC NAME | PRODUCT | SPECIAL CLEANING INSTRUCTIONS if not removed immediately |
|------------------------------|-------------------|---|
| Stubborn food residues | Dried food spills | Clean with clear water or a mild soap diluted with water and a soft brush. |
| Sugar containing soft drinks | | Clean with clear water or a mild soap diluted with water and a soft brush. |
| Hot drinks | | Clean with clear water or a mild soap diluted with water and a soft brush. |
| Special products | Cement cleaner | Clean with clear water or a mild soap diluted with water and a soft brush. |
| | Graffiti cleaner | |
| | PVC cleaner | Avoid using any product containing acetone. Acetone will leave a permanent mark on the surface. |
| Organic solvents | Acetone | Avoid using any product containing acetone. Acetone will leave a permanent mark on the surface. |
| Acids | Battery acid | Clean with clear water or a mild soap diluted with water and a soft brush. |
| | Chloric acid | |
| | ... | |
| Bases | Ammonia | Clean with clear water or a mild soap diluted with water and a soft brush. |
| Paint (wet) | Water based | Use graffiti cleaner P 995 or white spirit to remove paint. Other graffiti cleaners can not be used or should at least be tested beforehand on a small area out of sight. |
| | Synthetic based | |
| Hardened materials | Silicone | Remove material with a filling knife. |
| | Dried paint | Clean with clear water or a mild soap diluted with water and a soft brush. If necessary, heat candle wax with a standard hair dryer and use baking paper to absorb the wax. |
| | Glue | |
| | Candle wax | |
| Deep scratches | | Remove dust and dirt from the scratch and fill up the damaged area with the Terrace repair kit. (*) |

fig.4: Cleanability document.

(*) Special cleaning instruction with high-pressure cleaner need to be tested.

Terrace Massive Pro

5 Replacement

The logo for Deceuninck, featuring the brand name in white lowercase letters on a blue rectangular background.

1. Kit P 9477 (clip P 9364)
2. Kit P 9469 (clip P 9342)

01/2017 - V1.0 - published work© 2017 - Deceuninck

Deceuninck composed this brochure with the utmost care. Nevertheless, data contained in this brochure might be outdated, incomplete, and/or inaccurate. No rights, claims, commitments or guarantees can be derived from the presented information. The texts, photographs, logos, pictures and brands (among which Deceuninck, Linktrusion and Twinson included) are covered by intellectual property rights. They are exclusive property of Deceuninck. Nothing included in this publication can, fully or partially, in any way be reproduced without prior permission.

The available profiles and accessories may vary depending on your location. To find out which profiles and accessories are available in your area, see www.deceuninck.com or contact a local dealer.

After replacing a plank, the Terrace planks need to acclimatise again, this means there will be a colour difference initially. You can accelerate the weathering process by regularly adding moisture to the new plank using water. The difference in colour between the new and the old planks will converge much faster.

5.1 Kit P 9477

Sequence for plank removal / replacement.

1. Cut the Terrace plank to be replaced into two pieces along its length so it can be easily released. (fig. 1-2)
2. Place the new Terrace plank in its final resting position. Now shift the plank 60 mm in the direction of the adjacent planks. Mark the position of the hook of the clip. The marking should be on one side of the Terrace plank on the lower lip or flange. Remove the new Terrace plank and cut away the lip of the new plank where you have marked so the new Terrace plank can slide over the hook of the clip. (fig. 3-4)
3. Lay the Terrace plank flat by lining up the saw cuts with the hooks of the clips. Finally shift the Terrace plank 60 mm to the correct position. (fig. 5)

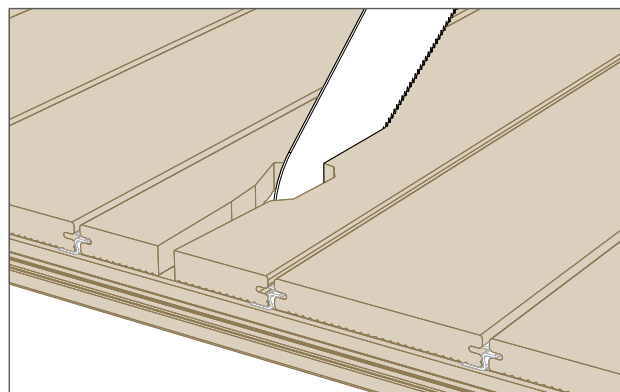


fig.1

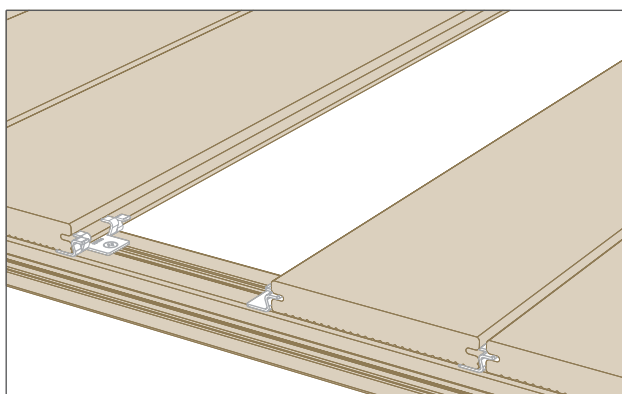


fig.2

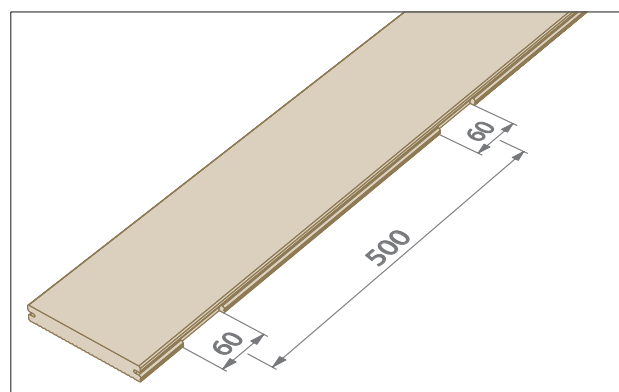


fig.3

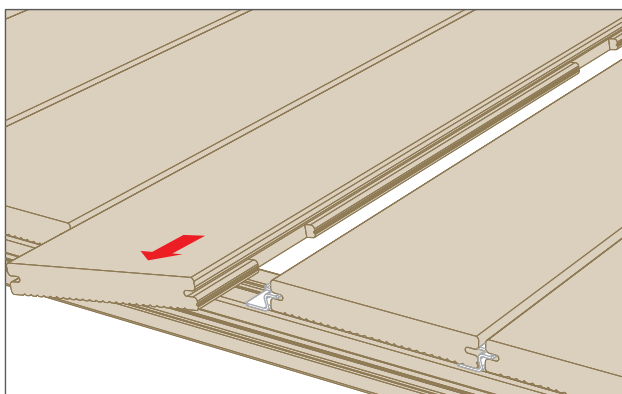


fig.4

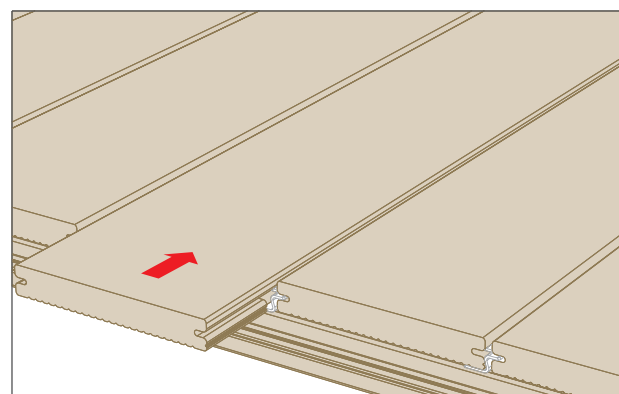


fig.5

5.2 Kit P 9469

Sequence for plank removal / replacement.

1. Cut the Terrace plank to be replaced into two pieces along its length so it can be easily released. (fig. 1-2)
2. Place the new Terrace plank in its final resting position. Now shift the plank 60 mm in the direction of the adjacent planks. Mark the position of the hook of the clip. The marking should be on one side of the Terrace plank on the lower lip or flange. Remove the new Terrace plank and cut away the lip of the new plank where you have marked so the new Terrace plank can slide over the hook of the clip. (fig. 3-4)
3. Lay the Terrace plank flat by lining up the saw cuts with the hooks of the clips. Finally shift the Terrace plank 60 mm to the correct position. (fig. 5)

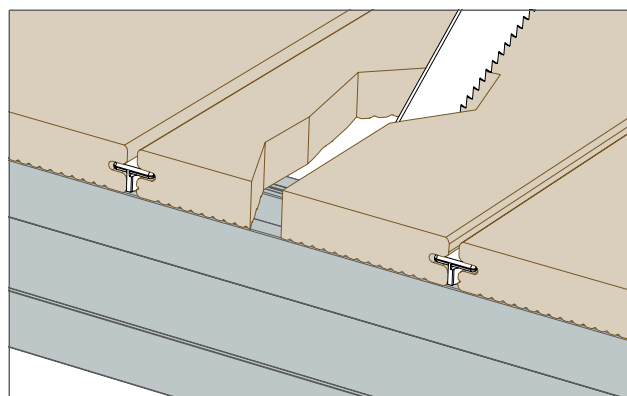


fig.1

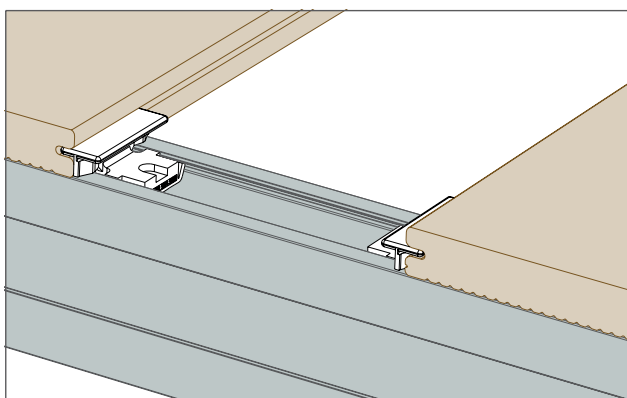


fig.2

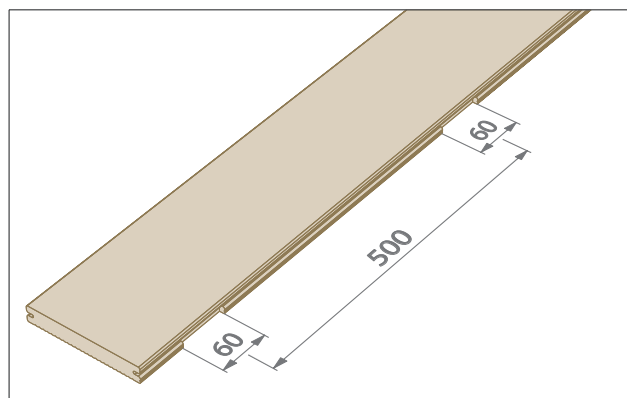


fig.3

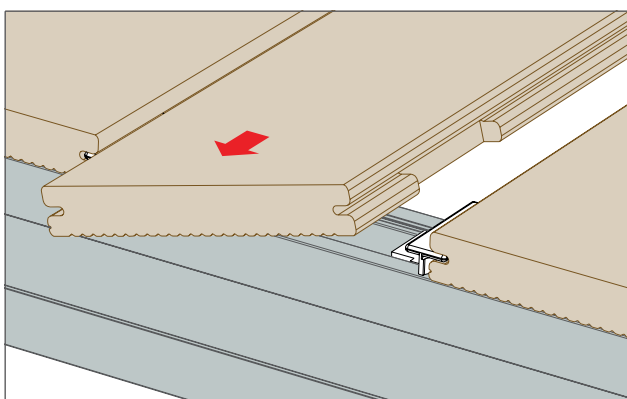


fig.4

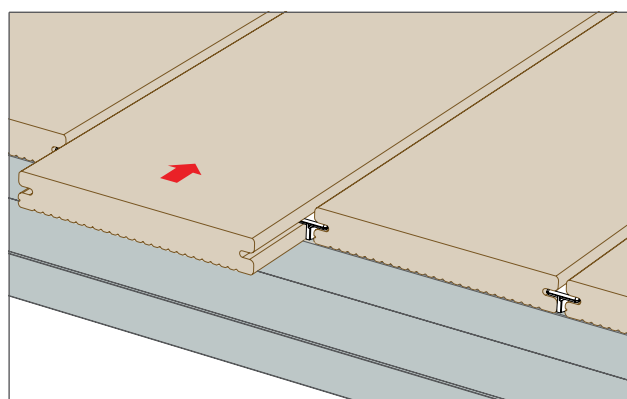


fig.5

Your Deceuninck partner

All Deceuninck certified partners are part of a professional dealer network with a focus on craftsmanship and service. This network is your guarantee of correct installation and the highest quality support, further enhancing the value of your Deceuninck product.



Windows & Doors

Quality in harmony with smart universal colours. Comfort. Space. Security. Exclusivity. An elegant design. The innovative window and door system gives you all.

Outdoor Living

Low maintenance and durable terrace. Enjoy all aspects of your house and garden with family, friends and neighbours.

Roofline & Cladding

An aesthetically pleasing collection of roofline accessories and cladding can enhance any property and add value with durability and style.

Interior

Durable and stylish window boards are easy to install. Our range of innovative interior profiles combine functionality with aesthetically pleasing design.

deceuninck



innovation



ecology



design

Building a sustainable home

At Deceuninck, our commitment towards innovation, ecology and design provides us with a clear focus: building a sustainable home. A home that is more energy-efficient to live in and more attractive to look at. Deceuninck works worldwide with state-of-the-art materials, resulting in low maintenance, top insulating and long lasting products that can be fully recycled at end of life. Moreover, our values help us build a better world for our partners and end users. Deceuninck sets the first step by building a sustainable home.

Deceuninck nv

Bruggesteenvweg 360 • BE-8830 Hoogdele-Gits

T +32 51 239 211 • F +32 51 227 993

info@deceuninck.com • www.deceuninck.com